
Product Name: Podoplanin Rabbit Monoclonal Antibody**Catalog #: AMRe87836**

For research use only.

Summary

Description	Recombinant rabbit monoclonal antibody
Host	Rabbit
Application	WB
Reactivity	Human, Mouse, Rat
Conjugation	Unconjugated
Modification	Unmodified
Isotype	IgG
Clonality	Monoclonal
Form	Liquid
Concentration	
Storage	Aliquot and store at -20°C (valid for 12 months). Avoid freeze/thaw cycles.
Shipping	Ice bags
Buffer	Supplied in 50mM Tris-Glycine(pH 7.4), 0.15M NaCl, 40% Glycerol, 0.01% sodium azide and 0.05% protective protein. Stable for 12 months from date of receipt.
Purification	Affinity Purification

Application

Dilution Ratio	WB 1:1000-1:5000
Molecular Weight	Calculated MW:17 kDa; Observed MW:36 kDa

Antigen Information

Gene Name	Podoplanin
Alternative Names	T1A; GP36; GP40; Gp38; OTS8; T1A2; T1A; T1A-2; AGGRUS; HT1A-1; PA2.26
Gene ID	10630
SwissProt ID	Q86YL7
Immunogen	A synthetic peptide of human Podoplanin/gp36

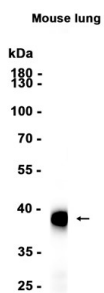
Background

This gene encodes a type-I integral membrane glycoprotein with diverse distribution in human tissues. The physiological function of this protein may be related to its mucin-type character. The homologous protein in other species has been

described as a differentiation antigen and influenza-virus receptor. The specific function of this protein has not been determined but it has been proposed as a marker of lung injury. Alternatively spliced transcript variants encoding different isoforms have been identified. [provided by RefSeq, Jul 2008]

Research Area

Image Data



Western blot analysis of extracts from Mouse lung tissue using Podoplanin Rabbit Monoclonal Antibody at 1:1000.