

**Product Name: Folate Binding Protein Rabbit
Monoclonal Antibody
Catalog #: AMRe87835**

Summary

| | |
|------------------------|---|
| Production Name | Folate Binding Protein Rabbit Monoclonal Antibody |
| Description | Rabbit Monoclonal antibody |
| Host | Rabbit |
| Application | WB, IHC-P |
| Reactivity | Human,Mouse,Rat |

Performance

| | |
|---------------------|---|
| Conjugation | Unconjugated |
| Modification | Unmodified |
| Isotype | IgG |
| Clonality | Monoclonal |
| Form | Liquid |
| Storage | Store at 4°C short term. Aliquot and store at -20°C long term. Avoid freeze/thaw cycles. |
| Buffer | Supplied in 50mM Tris-Glycine(pH 7.4), 0.15M NaCl, 40% Glycerol, 0.01% sodium azide and 0.05% BSA. Stable for 12 months from date of receipt. |
| Purification | Affinity Purification |

Immunogen

| | |
|--------------------------|------------------------|
| Gene Name | Folate Binding Protein |
| Alternative Names | FBP; FOLR |
| Gene ID | 2348 |
| SwissProt ID | P15328. |

Application

| | |
|-------------------------|--|
| Dilution Ratio | WB: 1:1000-1:5000 IHC-P: 1:200-1:1000 |
| Molecular Weight | Calculated MW:30 kDa; Observed MW:40 kDa |

**Product Name: Folate Binding Protein Rabbit
Monoclonal Antibody
Catalog #: AMRe87835**

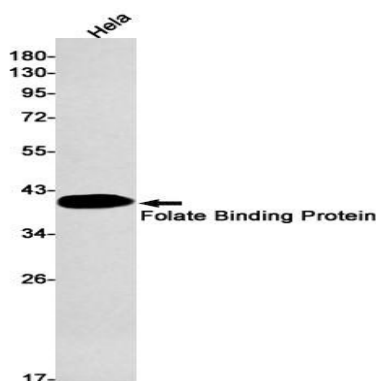


Background

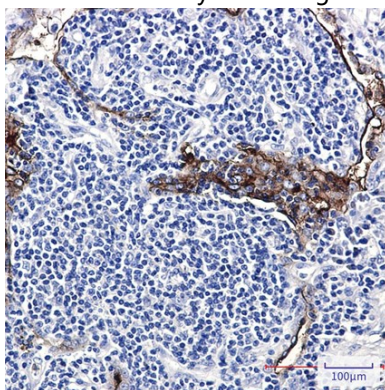
The protein encoded by this gene is a member of the folate receptor family. Members of this gene family bind folic acid and its reduced derivatives, and transport 5-methyltetrahydrofolate into cells. This gene product is a secreted protein that either anchors to membranes via a glycosyl-phosphatidylinositol linkage or exists in a soluble form. Mutations in this gene have been associated with neurodegeneration due to cerebral folate transport deficiency. Due to the presence of two promoters, multiple transcription start sites, and alternative splicing, multiple transcript variants encoding the same protein have been found for this gene. [provided by RefSeq, Oct 2009]

Research Area

Image Data

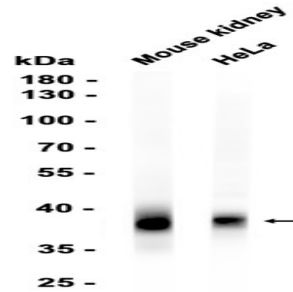


Western blot detection of Folate Binding Protein in HeLa cell lysates using Folate Binding Protein antibody(1:1000 diluted).



Immunohistochemical analysis of paraffin-embedded human lung cancer using AMRe87835 antibody.

**Product Name: Folate Binding Protein Rabbit
Monoclonal Antibody
Catalog #: AMRe87835**



Western blot analysis of extracts from HeLa cells and Mouse kidney tissue using AMRe87835 at 1:1000.

Note

For research use only.