
Product Name: TCP1 eta Rabbit Monoclonal Antibody**Catalog #: AMRe87834**

For research use only.

Summary

Description	Recombinant rabbit monoclonal antibody
Host	Rabbit
Application	WB,ICC/IF
Reactivity	Human,Mouse,Rat
Conjugation	Unconjugated
Modification	Unmodified
Isotype	IgG
Clonality	Monoclonal
Form	Liquid
Concentration	
Storage	Aliquot and store at -20°C (valid for 12 months). Avoid freeze/thaw cycles.
Shipping	Ice bags
Buffer	Supplied in 50mM Tris-Glycine(pH 7.4), 0.15M NaCl, 40% Glycerol, 0.01% sodium azide and 0.05% protective protein. Stable for 12 months from date of receipt.
Purification	Affinity Purification

Application

Dilution Ratio	WB 1:2000-1:20000,ICC/IF 1:100-1:200
Molecular Weight	Calculated MW:59 kDa; Observed MW:59 kDa

Antigen Information

Gene Name	TCP1 eta
Alternative Names	CCTH; CCTETA; NIP7-1; TCP1ETA
Gene ID	10574
SwissProt ID	Q99832
Immunogen	A synthetic peptide of human TCP1 eta

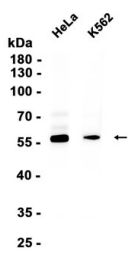
Background

This gene encodes a molecular chaperone that is a member of the chaperonin containing TCP1 complex (CCT), also known as the TCP1 ring complex (TRiC). This complex consists of two identical stacked rings, each containing eight different proteins.

Unfolded polypeptides enter the central cavity of the complex and are folded in an ATP-dependent manner. The complex folds various proteins, including actin and tubulin. Alternative splicing results in multiple transcript variants. Related pseudogenes have been identified on chromosomes 5 and 6. [provided by RefSeq, Oct 2009]

Research Area

Image Data



Western blot analysis of extracts from HeLa , K562 cells using TCP1 eta Rabbit Monoclonal Antibody at 1:10000.