

Product Name: Stathmin 1 Rabbit Monoclonal Antibody
Catalog #: AMRe87833



Summary

Production Name	Stathmin 1 Rabbit Monoclonal Antibody
Description	Rabbit Monoclonal antibody
Host	Rabbit
Application	WB, IHC-P, ICC/IF, FC, IP
Reactivity	Human,Mouse,Rat

Performance

Conjugation	Unconjugated
Modification	Unmodified
Isotype	IgG
Clonality	Monoclonal
Form	Liquid
Storage	Store at 4°C short term. Aliquot and store at -20°C long term. Avoid freeze/thaw cycles.
Buffer	Supplied in 50mM Tris-Glycine(pH 7.4), 0.15M NaCl, 40% Glycerol, 0.01% sodium azide and 0.05% protective protein. Stable for 12 months from date of receipt.
Purification	Affinity Purification

Immunogen

Gene Name	Stathmin 1
Alternative Names	Lag; SMN; OP18; PP17; PP19; PR22; LAP18; C1orf215
Gene ID	3925
SwissProt ID	P16949.

Application

Dilution Ratio	WB: 1:1000-1:5000 IHC-P: 1:200-1:2000 ICC/IF: 1:100-1:200 FC: 1:50-1:100 IP: 1:20-1:50
Molecular Weight	Calculated MW:17 kDa; Observed MW:17 kDa

Background

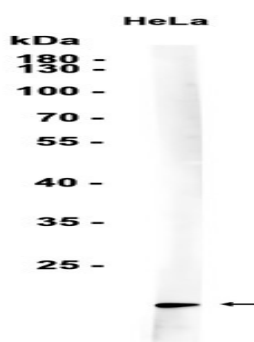
Product Name: Stathmin 1 Rabbit Monoclonal Antibody
Catalog #: AMRe87833



This gene belongs to the stathmin family of genes. It encodes a ubiquitous cytosolic phosphoprotein proposed to function as an intracellular relay integrating regulatory signals of the cellular environment. The encoded protein is involved in the regulation of the microtubule filament system by destabilizing microtubules. It prevents assembly and promotes disassembly of microtubules. Multiple transcript variants encoding different isoforms have been found for this gene.
[provided by RefSeq, Feb 2009]

Research Area

Image Data



Western blot analysis of extracts from HeLa cells using AMRe87833 at 1:1000.

Note

For research use only.