

**Product Name: Src Rabbit Monoclonal Antibody**  
**Catalog #: AMRe87826**



## Summary

<b>Production Name</b>	Src Rabbit Monoclonal Antibody
<b>Description</b>	Rabbit Monoclonal antibody
<b>Host</b>	Rabbit
<b>Application</b>	WB, IHC-P
<b>Reactivity</b>	Human,Mouse,Rat

## Performance

<b>Conjugation</b>	Unconjugated
<b>Modification</b>	Unmodified
<b>Isotype</b>	IgG
<b>Clonality</b>	Monoclonal
<b>Form</b>	Liquid
<b>Storage</b>	Store at 4°C short term. Aliquot and store at -20°C long term. Avoid freeze/thaw cycles.
<b>Buffer</b>	Supplied in 50mM Tris-Glycine(pH 7.4), 0.15M NaCl, 40% Glycerol, 0.01% sodium azide and 0.05% protective protein. Stable for 12 months from date of receipt.
<b>Purification</b>	Affinity Purification

## Immunogen

<b>Gene Name</b>	Src
<b>Alternative Names</b>	ASV; SRC1; THC6; c-SRC; p60-Src
<b>Gene ID</b>	6714
<b>SwissProt ID</b>	P12931.

## Application

<b>Dilution Ratio</b>	WB: 1:1000 IHC-P: 1:50
<b>Molecular Weight</b>	Calculated MW:60 kDa; Observed MW:60 kDa

## Background

This gene is highly similar to the v-src gene of Rous sarcoma virus. This proto-oncogene may play a role in the regulation

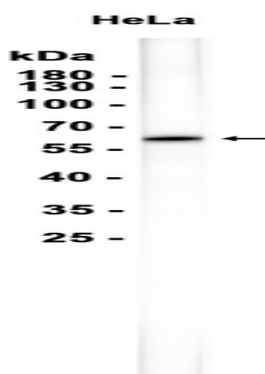
**Product Name: Src Rabbit Monoclonal Antibody**  
**Catalog #: AMRe87826**



of embryonic development and cell growth. The protein encoded by this gene is a tyrosine-protein kinase whose activity can be inhibited by phosphorylation by c-SRC kinase. Mutations in this gene could be involved in the malignant progression of colon cancer. Two transcript variants encoding the same protein have been found for this gene. [provided by RefSeq, Jul 2008]

## Research Area

## Image Data



Western blot analysis of extracts from HeLa cells using AMRe87826 at 1:1000.

## Note

For research use only.