

Product Name: SEC23B Rabbit Monoclonal Antibody
Catalog #: AMRe87822



Summary

Production Name	SEC23B Rabbit Monoclonal Antibody
Description	Rabbit Monoclonal antibody
Host	Rabbit
Application	WB, IHC-P, ICC/IF, FC, IP
Reactivity	Mouse

Performance

Conjugation	Unconjugated
Modification	Unmodified
Isotype	IgG
Clonality	Monoclonal
Form	Liquid
Storage	Store at 4°C short term. Aliquot and store at -20°C long term. Avoid freeze/thaw cycles.
Buffer	Supplied in 50mM Tris-Glycine(pH 7.4), 0.15M NaCl, 40% Glycerol, 0.01% sodium azide and 0.05% protective protein. Stable for 12 months from date of receipt.
Purification	Affinity Purification

Immunogen

Gene Name	SEC23B
Alternative Names	Protein transport protein Sec23B
Gene ID	27054
SwissProt ID	Q9D662.

Application

Dilution Ratio	WB: 1:1000 IHC-P: 1:200-1:1000 ICC/IF: 1:50 FC: 1:200-1:500 IP: 1:20-1:50
Molecular Weight	Calculated MW:86 kDa; Observed MW:86 kDa

Background

Component of the coat protein complex II (COPII) which promotes the formation of transport vesicles from the

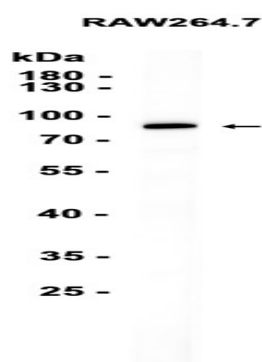
Product Name: SEC23B Rabbit Monoclonal Antibody
Catalog #: AMRe87822



endoplasmic reticulum (ER)

Research Area

Image Data



Western blot analysis of extracts from RAW.264.7 cells using AMRe87822 at 1:1000.

Note

For research use only.