

**Product Name: Mesothelin Rabbit Monoclonal Antibody****Catalog #: AMRe87815**

For research use only.

**Summary**

<b>Description</b>	Recombinant rabbit monoclonal antibody
<b>Host</b>	Rabbit
<b>Application</b>	WB,IHC,IP
<b>Reactivity</b>	Human
<b>Conjugation</b>	Unconjugated
<b>Modification</b>	Unmodified
<b>Isotype</b>	IgG
<b>Clonality</b>	Monoclonal
<b>Form</b>	Liquid
<b>Concentration</b>	
<b>Storage</b>	Aliquot and store at -20°C (valid for 12 months). Avoid freeze/thaw cycles.
<b>Shipping</b>	Ice bags
<b>Buffer</b>	Supplied in 50mM Tris-Glycine(pH 7.4), 0.15M NaCl, 40% Glycerol, 0.01% sodium azide and 0.05% protective protein. Stable for 12 months from date of receipt.
<b>Purification</b>	Affinity Purification

**Application**

<b>Dilution Ratio</b>	WB 1:1000-1:5000,IHC 1:200-1:1000,IP 1:10-1:100
<b>Molecular Weight</b>	Calculated MW:69 kDa; Observed MW:46-48, 70 kDa

**Antigen Information**

<b>Gene Name</b>	Mesothelin
<b>Alternative Names</b>	MPF; SMRP
<b>Gene ID</b>	10232
<b>SwissProt ID</b>	Q13421
<b>Immunogen</b>	A synthetic peptide of human Mesothelin

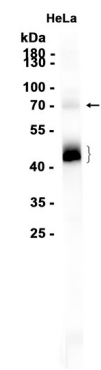
**Background**

This gene encodes a preproprotein that is proteolytically processed to generate two protein products, megakaryocyte potentiating factor and mesothelin. Megakaryocyte potentiating factor functions as a cytokine that can stimulate colony

formation of bone marrow megakaryocytes. Mesothelin is a glycosylphosphatidylinositol-anchored cell-surface protein that may function as a cell adhesion protein. This protein is overexpressed in epithelial mesotheliomas, ovarian cancers and in specific squamous cell carcinomas. Alternative splicing results in multiple transcript variants, at least one of which encodes an isoform that is proteolytically processed. [provided by RefSeq, Feb 2016]

## Research Area

## Image Data



Western blot analysis of extracts from HeLa cells using Mesothelin Rabbit Monoclonal Antibody at 1:1000.