

**Product Name: Methionyl Aminopeptidase 1 Rabbit
Monoclonal Antibody
Catalog #: AMRe87814**



Summary

Production Name	Methionyl Aminopeptidase 1 Rabbit Monoclonal Antibody
Description	Rabbit Monoclonal antibody
Host	Rabbit
Application	WB, IHC-P, ICC/IF, FC
Reactivity	Human, Mouse, Rat

Performance

Conjugation	Unconjugated
Modification	Unmodified
Isotype	IgG
Clonality	Monoclonal
Form	Liquid
Storage	Store at 4°C short term. Aliquot and store at -20°C long term. Avoid freeze/thaw cycles.
Buffer	Supplied in 50mM Tris-Glycine(pH 7.4), 0.15M NaCl, 40% Glycerol, 0.01% sodium azide and 0.05% BSA. Stable for 12 months from date of receipt.
Purification	Affinity Purification

Immunogen

Gene Name	Methionyl Aminopeptidase 1
Alternative Names	MAP1A; MetAP1A
Gene ID	23173
SwissProt ID	P53582.

Application

Dilution Ratio	WB: 1:1000 IHC-P: 1:100 ICC/IF: 1:100-1:200 FC: 1:100-1:200
Molecular Weight	Calculated MW:43 kDa; Observed MW:43 kDa

Background

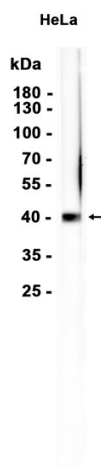
**Product Name: Methionyl Aminopeptidase 1 Rabbit
Monoclonal Antibody
Catalog #: AMRe87814**



Cotranslationally removes the N-terminal methionine from nascent proteins. The N-terminal methionine is often cleaved when the second residue in the primary sequence is small and uncharged (Met-Ala-, Cys, Gly, Pro, Ser, Thr, or Val). Required for normal progression through the cell cycle.

Research Area

Image Data



Western blot analysis of extracts from HeLa cells using AMRe87814 at 1:1000.

Note

For research use only.