

Product Name: SIX2 Rabbit Monoclonal Antibody**Catalog #: AMRe87809**

For research use only.

Summary

Description	Recombinant rabbit monoclonal antibody
Host	Rabbit
Application	WB
Reactivity	Human, Mouse, Rat
Conjugation	Unconjugated
Modification	Unmodified
Isotype	IgG
Clonality	Monoclonal
Form	Liquid
Concentration	
Storage	Aliquot and store at -20°C (valid for 12 months). Avoid freeze/thaw cycles.
Shipping	Ice bags
Buffer	Supplied in 50mM Tris-Glycine(pH 7.4), 0.15M NaCl, 40% Glycerol, 0.01% sodium azide and 0.05% protective protein. Stable for 12 months from date of receipt.
Purification	Affinity Purification

Application

Dilution Ratio	WB 1:1000-1:5000
Molecular Weight	Calculated MW:32 kDa; Observed MW:38 kDa

Antigen Information

Gene Name	SIX2
Alternative Names	Sine oculis homeobox homolog 2
Gene ID	10736
SwissProt ID	Q9NPC8
Immunogen	A synthetic peptide of human SIX2

Background

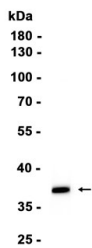
This gene is a member of the vertebrate gene family which encode proteins homologous to the Drosophila 'sine oculis' homeobox protein. The encoded protein is a transcription factor which, like other members of this gene family, may be

involved in limb or eye development. [provided by RefSeq, Dec 2008]

Research Area

Image Data

Mouse skeletal muscle



Western blot analysis of extracts from Mouse skeletal muscle tissue using SIX2 Rabbit Monoclonal Antibody at 1:1000.