

**Product Name: KRTHB3 Rabbit Monoclonal Antibody**  
**Catalog #: AMRe87807**



## Summary

<b>Production Name</b>	KRTHB3 Rabbit Monoclonal Antibody
<b>Description</b>	Rabbit Monoclonal antibody
<b>Host</b>	Rabbit
<b>Application</b>	WB
<b>Reactivity</b>	Human,Mouse,Rat

## Performance

<b>Conjugation</b>	Unconjugated
<b>Modification</b>	Unmodified
<b>Isotype</b>	IgG
<b>Clonality</b>	Monoclonal
<b>Form</b>	Liquid
<b>Storage</b>	Store at 4°C short term. Aliquot and store at -20°C long term. Avoid freeze/thaw cycles.
<b>Buffer</b>	Supplied in 50mM Tris-Glycine(pH 7.4), 0.15M NaCl, 40% Glycerol, 0.01% sodium azide and 0.05% BSA. Stable for 12 months from date of receipt.
<b>Purification</b>	Affinity Purification

## Immunogen

<b>Gene Name</b>	KRTHB3
<b>Alternative Names</b>	HB3; Hb-3; KRTHB3
<b>Gene ID</b>	3889
<b>SwissProt ID</b>	P78385.

## Application

<b>Dilution Ratio</b>	WB: 1:1000-1:5000
<b>Molecular Weight</b>	Calculated MW:54 kDa; Observed MW:54 kDa

## Background

The protein encoded by this gene is a member of the keratin gene family. As a type II hair keratin, it is a basic protein which

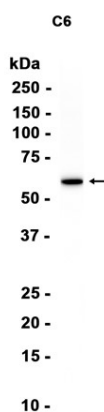
**Product Name: KRTHB3 Rabbit Monoclonal Antibody**  
**Catalog #: AMRe87807**



heterodimerizes with type I keratins to form hair and nails. The type II hair keratins are clustered in a region of chromosome 12q13 and are grouped into two distinct subfamilies based on structure similarity. One subfamily, consisting of KRTHB1, KRTHB3, and KRTHB6, is highly related. The other less-related subfamily includes KRTHB2, KRTHB4, and KRTHB5. All hair keratins are expressed in the hair follicle; this hair keratin, as well as KRTHB1 and KRTHB6, is found primarily in the hair cortex. [provided by RefSeq, Jul 2008]

## Research Area

## Image Data



Western blot analysis of extracts from C6 cells using AMRe87807 at 1:1000.

## Note

For research use only.