

Product Name: CD14 Rabbit Monoclonal Antibody
Catalog #: AMRe87804



Summary

Production Name	CD14 Rabbit Monoclonal Antibody
Description	Rabbit Monoclonal antibody
Host	Rabbit
Application	WB, ICC/IF, FC, IP
Reactivity	Mouse

Performance

Conjugation	Unconjugated
Modification	Unmodified
Isotype	IgG
Clonality	Monoclonal
Form	Liquid
Storage	Store at 4°C short term. Aliquot and store at -20°C long term. Avoid freeze/thaw cycles.
Buffer	Supplied in 50mM Tris-Glycine(pH 7.4), 0.15M NaCl, 40% Glycerol, 0.01% sodium azide and 0.05% BSA. Stable for 12 months from date of receipt.
Purification	Affinity Purification

Immunogen

Gene Name	CD14
Alternative Names	Myeloid cell-specific leucine-rich glycoprotein
Gene ID	12475
SwissProt ID	P10810.

Application

Dilution Ratio	WB: 1:1000 ICC/IF: 1:500-1:1000 FC: 1:200-1:500 IP: 1:20-1:50
Molecular Weight	Calculated MW:39 kDa; Observed MW:45-52 kDa

Background

This gene encodes a protein that plays an important role in the innate immune response and is expressed in

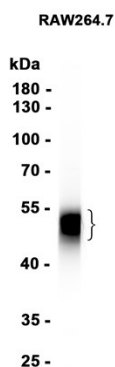
Product Name: CD14 Rabbit Monoclonal Antibody
Catalog #: AMRe87804



monocyte/macrophage cells. This gene product acts as a co-receptor that binds several microbial and fungal molecules, including lipopolysaccharides (LPS). This proteins LPS-binding activity is enhanced by the LPS binding protein (LBP) to allow binding to the TLR4-MD-2 co-receptor complex. The product of this gene is found in two forms, either as a soluble protein or attached to the cell surface by a glycosylphosphatidylinositol anchor. [provided by RefSeq, Jul 2014]

Research Area

Image Data



Western blot analysis of extracts from RAW264.7 cells using AMRe87804 at 1:1000.

Note

For research use only.