

**Product Name: MRPS26 Rabbit Monoclonal Antibody**  
**Catalog #: AMRe87798**



## Summary

<b>Production Name</b>	MRPS26 Rabbit Monoclonal Antibody
<b>Description</b>	Rabbit Monoclonal antibody
<b>Host</b>	Rabbit
<b>Application</b>	WB, ICC/IF
<b>Reactivity</b>	Human

## Performance

<b>Conjugation</b>	Unconjugated
<b>Modification</b>	Unmodified
<b>Isotype</b>	IgG
<b>Clonality</b>	Monoclonal
<b>Form</b>	Liquid
<b>Storage</b>	Store at 4°C short term. Aliquot and store at -20°C long term. Avoid freeze/thaw cycles.
<b>Buffer</b>	Supplied in 50mM Tris-Glycine(pH 7.4), 0.15M NaCl, 40% Glycerol, 0.01% sodium azide and 0.05% BSA. Stable for 12 months from date of receipt.
<b>Purification</b>	Affinity Purification

## Immunogen

<b>Gene Name</b>	MRPS26
<b>Alternative Names</b>	GI008; MRPS13; RPMS13; MRP-S13; MRP-S26; NY-BR-87; C20orf193; dJ534B8.3
<b>Gene ID</b>	64949
<b>SwissProt ID</b>	Q9BYN8.

## Application

<b>Dilution Ratio</b>	WB: 1:1000-1:5000 ICC/IF: 1:100-1:200
<b>Molecular Weight</b>	Calculated MW:24 kDa; Observed MW:24 kDa

## Background

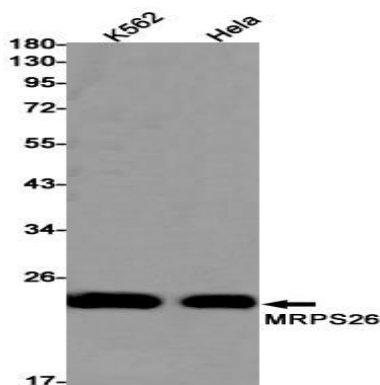
**Product Name: MRPS26 Rabbit Monoclonal Antibody**  
**Catalog #: AMRe87798**



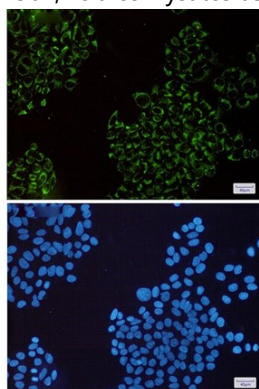
Mammalian mitochondrial ribosomal proteins are encoded by nuclear genes and help in protein synthesis within the mitochondrion. Mitochondrial ribosomes (mitoribosomes) consist of a small 28S subunit and a large 39S subunit. They have an estimated 75% protein to rRNA composition compared to prokaryotic ribosomes, where this ratio is reversed. Another difference between mammalian mitoribosomes and prokaryotic ribosomes is that the latter contain a 5S rRNA. Among different species, the proteins comprising the mitoribosome differ greatly in sequence, and sometimes in biochemical properties, which prevents easy recognition by sequence homology. This gene encodes a 28S subunit protein. This gene lies adjacent to and downstream of the gonadotropin-releasing hormone precursor gene. [provided by RefSeq, Jul 2008]

## Research Area

## Image Data

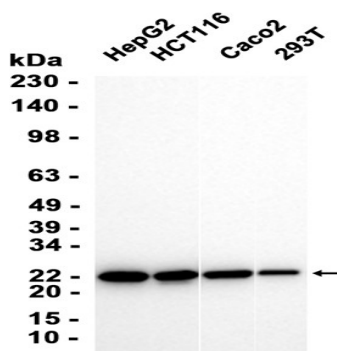


Western blot detection of MRPS26 in K562, HeLa cell lysates using MRPS26 antibody (1:1000 diluted).



Immunofluorescent analysis of HeLa cells using AMRe87798 antibody (green), and DAPI (blue).

**Product Name: MRPS26 Rabbit Monoclonal Antibody**  
**Catalog #: AMRe87798**



Western blot analysis of extracts from HepG2, HCT116, Caco2, 293T cells using AMRe87798 at 1:1000.

### **Note**

For research use only.