
Product Name: RAS Rabbit Monoclonal Antibody**Catalog #: AMRe87795**

For research use only.

Summary

Description	Recombinant rabbit monoclonal antibody
Host	Rabbit
Application	WB,IHC,ICC/IF,FC,IP
Reactivity	Human,Mouse,Rat
Conjugation	Unconjugated
Modification	Unmodified
Isotype	IgG
Clonality	Monoclonal
Form	Liquid
Concentration	0.15mg/ml. The concentration of this product may be batch-dependent.
Storage	Aliquot and store at -20°C (valid for 12 months). Avoid freeze/thaw cycles.
Shipping	Ice bags
Buffer	Supplied in 50mM Tris-Glycine(pH 7.4), 0.15M NaCl, 40% Glycerol, 0.01% sodium azide and 0.05% protective protein. Stable for 12 months from date of receipt.
Purification	Affinity Purification

Application

Dilution Ratio	WB 1:1000-1:5000,IHC 1:500-1:2000,ICC/IF 1:50-1:100,FC 1:20-1:50,IP 1:10-1:100
Molecular Weight	Calculated MW:22 kDa; Observed MW:22 kDa

Antigen Information

Gene Name	RAS
Alternative Names	NS6; CMNS; NCMS; ALPS4; N-ras; NRAS1
Gene ID	4893
SwissProt ID	P01111
Immunogen	A synthetic peptide of human RAS

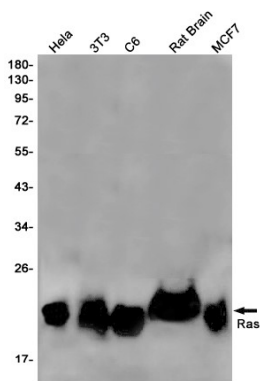
Background

This is an N-ras oncogene encoding a membrane protein that shuttles between the Golgi apparatus and the plasma membrane. This shuttling is regulated through palmitoylation and depalmitoylation by the ZDHHC9-GOLGA7 complex. The encoded

protein, which has intrinsic GTPase activity, is activated by a guanine nucleotide-exchange factor and inactivated by a GTPase activating protein. Mutations in this gene have been associated with somatic rectal cancer, follicular thyroid cancer, autoimmune lymphoproliferative syndrome, Noonan syndrome, and juvenile myelomonocytic leukemia. [provided by RefSeq, Jun 2011]

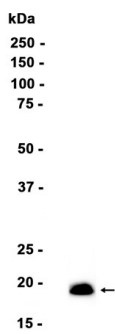
Research Area

Image Data



Western blot detection of Ras in HeLa,3T3,C6,Rat Brain,MCF7 cell lysates using Ras antibody(1:1000 diluted).

293



Western blot analysis of extracts from 293 cells using db13174 at 1:1000.