
Product Name: Syntenin Rabbit Monoclonal Antibody**Catalog #: AMRe87790**

For research use only.

Summary

Description	Recombinant rabbit monoclonal antibody
Host	Rabbit
Application	WB,IHC,ICC/IF,FC,IP
Reactivity	Human
Conjugation	Unconjugated
Modification	Unmodified
Isotype	IgG
Clonality	Monoclonal
Form	Liquid
Concentration	0.5mg/ml. The concentration of this product may be batch-dependent.
Storage	Aliquot and store at -20°C (valid for 12 months). Avoid freeze/thaw cycles.
Shipping	Ice bags
Buffer	Supplied in 50mM Tris-Glycine(pH 7.4), 0.15M NaCl, 40% Glycerol, 0.01% sodium azide and 0.05% protective protein. Stable for 12 months from date of receipt.
Purification	Affinity Purification

Application

Dilution Ratio	WB 1:1000-1:5000,IHC 1:50-1:100,ICC/IF 1:50-1:200,FC 1:20-1:50,IP 1:10-1:100
Molecular Weight	Calculated MW:32 kDa; Observed MW:32 kDa

Antigen Information

Gene Name	Syntenin
Alternative Names	ST1; MDA9; SYCL; MDA-9; TACIP18
Gene ID	6386
SwissProt ID	O00560
Immunogen	A synthetic peptide of human Syntenin

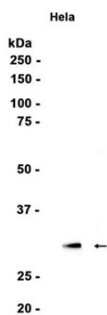
Background

The protein encoded by this gene was initially identified as a molecule linking syndecan-mediated signaling to the cytoskeleton. The syntenin protein contains tandemly repeated PDZ domains that bind the cytoplasmic, C-terminal domains of

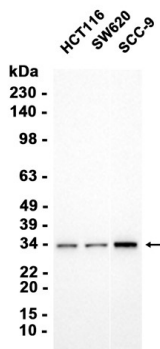
a variety of transmembrane proteins. This protein may also affect cytoskeletal-membrane organization, cell adhesion, protein trafficking, and the activation of transcription factors. The protein is primarily localized to membrane-associated adherens junctions and focal adhesions but is also found at the endoplasmic reticulum and nucleus. Alternative splicing results in multiple transcript variants encoding different isoforms. Related pseudogenes have been identified on multiple chromosomes. [provided by RefSeq, Jan 2017]

Research Area

Image Data



Western blot analysis of extracts from HeLa cells using Syntenin Rabbit Monoclonal Antibody at 1:1000.



Western blot analysis of extracts from HCT116 , SW620 , SCC-9 cells using AMRe87790 at 1:3000.