
Product Name: TGIF Rabbit Monoclonal Antibody**Catalog #: AMRe87789**

For research use only.

Summary

Description	Recombinant rabbit monoclonal antibody
Host	Rabbit
Application	WB,IP
Reactivity	Human
Conjugation	Unconjugated
Modification	Unmodified
Isotype	IgG
Clonality	Monoclonal
Form	Liquid
Concentration	0.5mg/ml. The concentration of this product may be batch-dependent.
Storage	Aliquot and store at -20°C (valid for 12 months). Avoid freeze/thaw cycles.
Shipping	Ice bags
Buffer	Supplied in 50mM Tris-Glycine(pH 7.4), 0.15M NaCl, 40% Glycerol, 0.01% sodium azide and 0.05% protective protein. Stable for 12 months from date of receipt.
Purification	Affinity Purification

Application

Dilution Ratio	WB 1:1000-1:5000,IP 1:50-1:200
Molecular Weight	Calculated MW:43 kDa; Observed MW:32-34 kDa

Antigen Information

Gene Name	TGIF
Alternative Names	HPE4; TGIF
Gene ID	7050
SwissProt ID	Q15583
Immunogen	A synthetic peptide of human TGIF

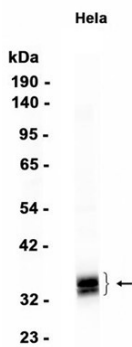
Background

The protein encoded by this gene is a member of the three-amino acid loop extension (TALE) superclass of atypical homeodomains. TALE homeobox proteins are highly conserved transcription regulators. This particular homeodomain binds to

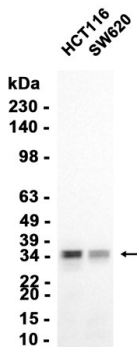
a previously characterized retinoid X receptor responsive element from the cellular retinol-binding protein II promoter. In addition to its role in inhibiting 9-cis-retinoic acid-dependent RXR alpha transcription activation of the retinoic acid responsive element, the protein is an active transcriptional co-repressor of SMAD2 and may participate in the transmission of nuclear signals during development and in the adult. Mutations in this gene are associated with holoprosencephaly type 4, which is a structural anomaly of the brain. Alternative splicing has been observed at this locus and multiple splice variants encoding distinct isoforms are described. [provided by RefSeq, Jul 2013]

Research Area

Image Data



Western blot analysis of extracts from HeLa cells using TGIF Rabbit Monoclonal Antibody at 1:1000.



Western blot analysis of extracts from HCT116, SW620 cells using AMRe87789 at 1:1000.