
Product Name: XPB Rabbit Monoclonal Antibody**Catalog #: AMRe87788**

For research use only.

Summary

Description	Recombinant rabbit monoclonal antibody
Host	Rabbit
Application	WB,ICC/IF
Reactivity	Human
Conjugation	Unconjugated
Modification	Unmodified
Isotype	IgG
Clonality	Monoclonal
Form	Liquid
Concentration	0.5mg/ml. The concentration of this product may be batch-dependent.
Storage	Aliquot and store at -20°C (valid for 12 months). Avoid freeze/thaw cycles.
Shipping	Ice bags
Buffer	Supplied in 50mM Tris-Glycine(pH 7.4), 0.15M NaCl, 40% Glycerol, 0.01% sodium azide and 0.05% protective protein. Stable for 12 months from date of receipt.
Purification	Affinity Purification

Application

Dilution Ratio	WB 1:1000-1:5000,ICC/IF 1:200-1:500
Molecular Weight	Calculated MW:89 kDa; Observed MW:89 kDa

Antigen Information

Gene Name	XPB
Alternative Names	XPB; BTF2; TTD2; GTF2H; RAD25; TFIIH
Gene ID	2071
SwissProt ID	P19447
Immunogen	A synthetic peptide of human XPB

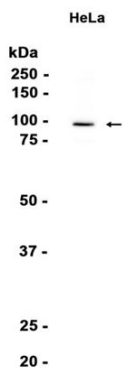
Background

This gene encodes an ATP-dependent DNA helicase that functions in nucleotide excision repair. The encoded protein is a subunit of basal transcription factor 2 (TFIIH) and, therefore, also functions in class II transcription. Mutations in this gene are

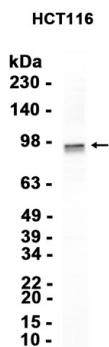
associated with Xeroderma pigmentosum B, Cockayne's syndrome, and trichothiodystrophy. Alternative splicing results in multiple transcript variants. [provided by RefSeq, Dec 2014]

Research Area

Image Data



Western blot analysis of extracts from HeLa cells using XPB Rabbit Monoclonal Antibody at 1:1000.



Western blot analysis of extracts from HCT116 cells using AMRe87788 at 1:3000.