

---

**Product Name: SEC22B Rabbit Monoclonal Antibody****Catalog #: AMRe87786**

For research use only.

**Summary**

<b>Description</b>	Recombinant rabbit monoclonal antibody
<b>Host</b>	Rabbit
<b>Application</b>	WB,ICC/IF,FC,IP
<b>Reactivity</b>	Human,Mouse,Rat
<b>Conjugation</b>	Unconjugated
<b>Modification</b>	Unmodified
<b>Isotype</b>	IgG
<b>Clonality</b>	Monoclonal
<b>Form</b>	Liquid
<b>Concentration</b>	0.5mg/ml. The concentration of this product may be batch-dependent.
<b>Storage</b>	Aliquot and store at -20°C (valid for 12 months). Avoid freeze/thaw cycles.
<b>Shipping</b>	Ice bags
<b>Buffer</b>	Supplied in 50mM Tris-Glycine(pH 7.4), 0.15M NaCl, 40% Glycerol, 0.01% sodium azide and 0.05% protective protein. Stable for 12 months from date of receipt.
<b>Purification</b>	Affinity Purification

**Application**

<b>Dilution Ratio</b>	WB 1:1000-1:5000,ICC/IF 1:50-1:200,FC 1:20-1:50,IP 1:20-1:50
<b>Molecular Weight</b>	Calculated MW:25 kDa; Observed MW:25 kDa

**Antigen Information**

<b>Gene Name</b>	SEC22B
<b>Alternative Names</b>	ERS-24; SEC22L1
<b>Gene ID</b>	9554
<b>SwissProt ID</b>	O75396
<b>Immunogen</b>	A synthetic peptide of human SEC22B

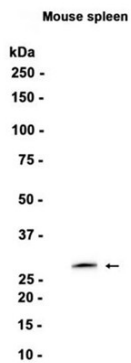
**Background**

The protein encoded by this gene is a member of the SEC22 family of vesicle trafficking proteins. It seems to complex with SNARE and it is thought to play a role in the ER-Golgi protein trafficking. This protein has strong similarity to Mus musculus and

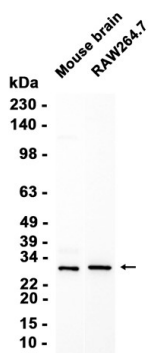
Cricetulus griseus proteins.[provided by RefSeq, Sep 2009]

## Research Area

## Image Data



Western blot analysis of extracts from Mouse spleen tissue using SEC22B Rabbit Monoclonal Antibody at 1:1000.



Western blot analysis of extracts from RAW264.7 cells and Mouse brain tissue using AMRe87786 at 1:1000.