

## Summary

<b>Production Name</b>	TPGS1 Rabbit Monoclonal Antibody
<b>Description</b>	Rabbit Monoclonal antibody
<b>Host</b>	Rabbit
<b>Application</b>	WB, FC, IP
<b>Reactivity</b>	Human,Mouse,Rat

## Performance

<b>Conjugation</b>	Unconjugated
<b>Modification</b>	Unmodified
<b>Isotype</b>	IgG
<b>Clonality</b>	Monoclonal
<b>Form</b>	Liquid
<b>Storage</b>	Store at 4°C short term. Aliquot and store at -20°C long term. Avoid freeze/thaw cycles.
<b>Buffer</b>	Supplied in 50mM Tris-Glycine(pH 7.4), 0.15M NaCl, 40% Glycerol, 0.01% sodium azide and 0.05% BSA. Stable for 12 months from date of receipt.
<b>Purification</b>	Affinity Purification

## Immunogen

<b>Gene Name</b>	TPGS1
<b>Alternative Names</b>	PGs1; C19orf20; GTRGEO22
<b>Gene ID</b>	91978
<b>SwissProt ID</b>	Q6ZTW0.

## Application

<b>Dilution Ratio</b>	WB: 1:1000-1:5000 FC: 1:20-1:50 IP: 1:20
<b>Molecular Weight</b>	Calculated MW:31 kDa; Observed MW:31 kDa

## Background

May act in the targeting of the tubulin polyglutamylase complex. Required for the development of the spermatid flagellum

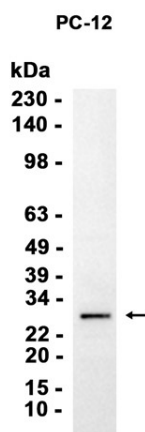
**Product Name: TPGS1 Rabbit Monoclonal Antibody**  
**Catalog #: AMRe87785**



(By similarity).

## Research Area

## Image Data



Western blot analysis of extracts from PC-12 cells using AMRe87785 at 1:1000.

## Note

For research use only.