

---

**Product Name: RICTOR Rabbit Monoclonal Antibody****Catalog #: AMRe87778**

For research use only.

**Summary**

<b>Description</b>	Recombinant rabbit monoclonal antibody
<b>Host</b>	Rabbit
<b>Application</b>	WB,FC
<b>Reactivity</b>	Human
<b>Conjugation</b>	Unconjugated
<b>Modification</b>	Unmodified
<b>Isotype</b>	IgG
<b>Clonality</b>	Monoclonal
<b>Form</b>	Liquid
<b>Concentration</b>	
<b>Storage</b>	Aliquot and store at -20°C (valid for 12 months). Avoid freeze/thaw cycles.
<b>Shipping</b>	Ice bags
<b>Buffer</b>	Supplied in 50mM Tris-Glycine(pH 7.4), 0.15M NaCl, 40% Glycerol, 0.01% sodium azide and 0.05% protective protein. Stable for 12 months from date of receipt.
<b>Purification</b>	Affinity Purification

**Application**

<b>Dilution Ratio</b>	WB 1:500-1:2000,FC 1:200-1:500
<b>Molecular Weight</b>	Calculated MW:192 kDa; Observed MW:200 kDa

**Antigen Information**

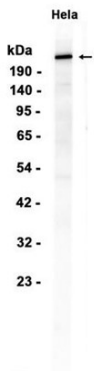
<b>Gene Name</b>	RICTOR
<b>Alternative Names</b>	PIA; AVO3; hAVO3
<b>Gene ID</b>	253260
<b>SwissProt ID</b>	Q6R327
<b>Immunogen</b>	A synthetic peptide of human RICTOR

**Background**

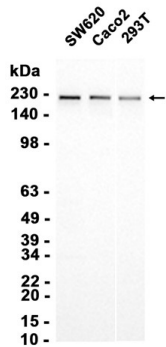
RICTOR and MTOR (FRAP1; MIM 601231) are components of a protein complex that integrates nutrient- and growth factor-derived signals to regulate cell growth (Sarbassov et al., 2004 [PubMed 15268862]).[supplied by OMIM, Mar 2008]

## Research Area

## Image Data



Western blot analysis of extracts from HeLa cells using RICTOR Rabbit Monoclonal Antibody at 1:1000.



Western blot analysis of extracts from SW620 , Caco2 , 293T cells using AMRe87778 at 1:1000.