

Product Name: Phospho-RPS6 (Ser240/Ser244) Rabbit Monoclonal Antibody
Catalog #: AMRe87775

Summary

Production Name	Phospho-RPS6 (Ser240/Ser244) Rabbit Monoclonal Antibody
Description	Rabbit Monoclonal antibody
Host	Rabbit
Application	WB, IHC-P, ICC/IF, FC, IP
Reactivity	Human, Mouse, Rat

Performance

Conjugation	Unconjugated
Modification	Phosphorylated
Isotype	IgG
Clonality	Monoclonal
Form	Liquid
Storage	Store at 4°C short term. Aliquot and store at -20°C long term. Avoid freeze/thaw cycles.
Buffer	Supplied in 50mM Tris-Glycine(pH 7.4), 0.15M NaCl, 40% Glycerol, 0.01% sodium azide and 0.05% BSA. Stable for 12 months from date of receipt.
Purification	Affinity Purification

Immunogen

Gene Name	Phospho-RPS6 (Ser240/Ser244) Rabbit Monoclonal Antibody
Alternative Names	S6
Gene ID	6194
SwissProt ID	P62753.

Application

Dilution Ratio	WB: 1:1000-1:5000 IHC-P: 1:200-1:1000 ICC/IF: 1:100 FC: 1:200-1:500 IP: 1:20-1:50
Molecular Weight	Calculated MW:29 kDa; Observed MW:32 kDa

Background

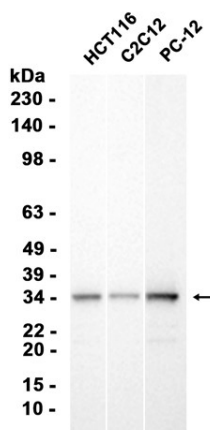
**Product Name: Phospho-RPS6 (Ser240/Ser244) Rabbit
Monoclonal Antibody
Catalog #: AMRe87775**



Ribosomes, the organelles that catalyze protein synthesis, consist of a small 40S subunit and a large 60S subunit. Together these subunits are composed of 4 RNA species and approximately 80 structurally distinct proteins. This gene encodes a cytoplasmic ribosomal protein that is a component of the 40S subunit. The protein belongs to the S6E family of ribosomal proteins. It is the major substrate of protein kinases in the ribosome, with subsets of five C-terminal serine residues phosphorylated by different protein kinases. Phosphorylation is induced by a wide range of stimuli, including growth factors, tumor-promoting agents, and mitogens. Dephosphorylation occurs at growth arrest. The protein may contribute to the control of cell growth and proliferation through the selective translation of particular classes of mRNA. As is typical for genes encoding ribosomal proteins, there are multiple processed pseudogenes of this gene dispersed through the genome. [provided by RefSeq, Jul 2008]

Research Area

Image Data



Western blot analysis of extracts from HCT116, C2C12, PC-12 cells using AMRe87775 at 1:1000.

Note

For research use only.