

Product Name: RPS8 Rabbit Monoclonal Antibody
Catalog #: AMRe87774



Summary

| | |
|------------------------|---------------------------------|
| Production Name | RPS8 Rabbit Monoclonal Antibody |
| Description | Rabbit Monoclonal antibody |
| Host | Rabbit |
| Application | WB, ICC/IF, FC, IP |
| Reactivity | Human,Mouse,Rat |

Performance

| | |
|---------------------|---|
| Conjugation | Unconjugated |
| Modification | Unmodified |
| Isotype | IgG |
| Clonality | Monoclonal |
| Form | Liquid |
| Storage | Store at 4°C short term. Aliquot and store at -20°C long term. Avoid freeze/thaw cycles. |
| Buffer | Supplied in 50mM Tris-Glycine(pH 7.4), 0.15M NaCl, 40% Glycerol, 0.01% sodium azide and 0.05% BSA. Stable for 12 months from date of receipt. |
| Purification | Affinity Purification |

Immunogen

| | |
|--------------------------|---------|
| Gene Name | RPS8 |
| Alternative Names | S8 |
| Gene ID | 6202 |
| SwissProt ID | P62241. |

Application

| | |
|-------------------------|---|
| Dilution Ratio | WB: 1:1000 ICC/IF: 1:200-1:500 FC: 1:100-1:200 IP: 1:50 |
| Molecular Weight | Calculated MW:24 kDa; Observed MW:24 kDa |

Background

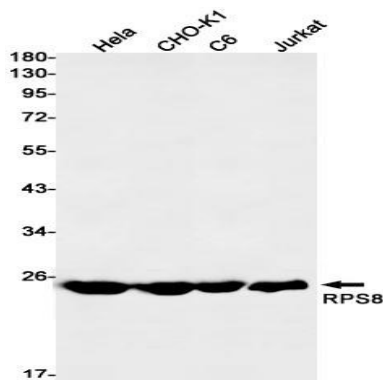
Product Name: RPS8 Rabbit Monoclonal Antibody
Catalog #: AMRe87774



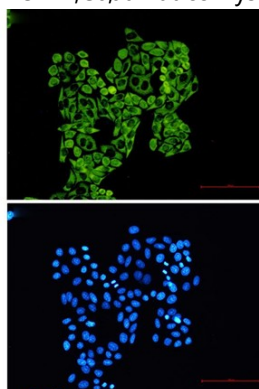
Ribosomes, the organelles that catalyze protein synthesis, consist of a small 40S subunit and a large 60S subunit. Together these subunits are composed of 4 RNA species and approximately 80 structurally distinct proteins. This gene encodes a ribosomal protein that is a component of the 40S subunit. The protein belongs to the S8E family of ribosomal proteins. It is located in the cytoplasm. Increased expression of this gene in colorectal tumors and colon polyps compared to matched normal colonic mucosa has been observed. This gene is co-transcribed with the small nucleolar RNA genes U38A, U38B, U39, and U40, which are located in its fourth, fifth, first, and second introns, respectively. As is typical for genes encoding ribosomal proteins, there are multiple processed pseudogenes of this gene dispersed through the genome. [provided by RefSeq, Jul 2008]

Research Area

Image Data

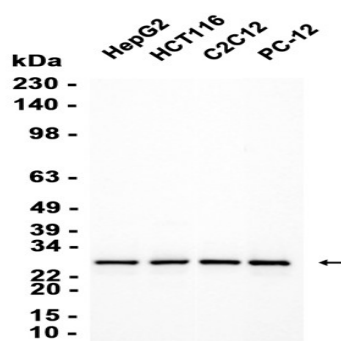


Western blot detection of RPS8 in HeLa, CHO-K1, C6, Jurkat cell lysates using RPS8 antibody (1:1000 diluted).



Immunofluorescent analysis of HeLa cells using AMRe87774 antibody (green), and DAPI (blue).

Product Name: RPS8 Rabbit Monoclonal Antibody
Catalog #: AMRe87774



Western blot analysis of extracts from HepG2, HCT116, C2C12, PC-12 cells using AMRe87774 at 1:1000.

Note

For research use only.