
Product Name: Lin28B Rabbit Monoclonal Antibody**Catalog #: AMRe87762**

For research use only.

Summary

Description	Recombinant rabbit monoclonal antibody
Host	Rabbit
Application	WB,ICC/IF,FC,IP
Reactivity	Human
Conjugation	Unconjugated
Modification	Unmodified
Isotype	IgG
Clonality	Monoclonal
Form	Liquid
Concentration	
Storage	Aliquot and store at -20°C (valid for 12 months). Avoid freeze/thaw cycles.
Shipping	Ice bags
Buffer	Supplied in 50mM Tris-Glycine(pH 7.4), 0.15M NaCl, 40% Glycerol, 0.01% sodium azide and 0.05% protective protein. Stable for 12 months from date of receipt.
Purification	Affinity Purification

Application

Dilution Ratio	WB 1:500-1:2000,ICC/IF 1:100-1:200,FC 1:20-1:50,IP 1:20-1:50
Molecular Weight	Calculated MW:27 kDa; Observed MW:35 kDa

Antigen Information

Gene Name	Lin28B
Alternative Names	CSDD2
Gene ID	389421
SwissProt ID	Q6ZN17
Immunogen	Recombinant protein of human Lin28B

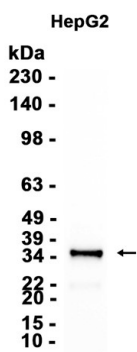
Background

The protein encoded by this gene belongs to the lin-28 family, which is characterized by the presence of a cold-shock domain and a pair of CCHC zinc finger domains. This gene is highly expressed in testis, fetal liver, placenta, and in primary human

tumors and cancer cell lines. It is negatively regulated by microRNAs that target sites in the 3' UTR, and overexpression of this gene in primary tumors is linked to the repression of let-7 family of microRNAs and derepression of let-7 targets, which facilitates cellular transformation. [provided by RefSeq, Jun 2012]

Research Area

Image Data



Western blot analysis of extracts from HepG2 cells using Lin28B Rabbit Monoclonal Antibody at 1:1000.