

---

**Product Name: ABL2 Rabbit Monoclonal Antibody****Catalog #: AMRe87758**

For research use only.

**Summary**

<b>Description</b>	Recombinant rabbit monoclonal antibody
<b>Host</b>	Rabbit
<b>Application</b>	WB,FC
<b>Reactivity</b>	Human,Mouse,Rat
<b>Conjugation</b>	Unconjugated
<b>Modification</b>	Unmodified
<b>Isotype</b>	IgG
<b>Clonality</b>	Monoclonal
<b>Form</b>	Liquid
<b>Concentration</b>	
<b>Storage</b>	Aliquot and store at -20°C (valid for 12 months). Avoid freeze/thaw cycles.
<b>Shipping</b>	Ice bags
<b>Buffer</b>	Supplied in 50mM Tris-Glycine(pH 7.4), 0.15M NaCl, 40% Glycerol, 0.01% sodium azide and 0.05% protective protein. Stable for 12 months from date of receipt.
<b>Purification</b>	Affinity Purification

**Application**

<b>Dilution Ratio</b>	WB 1:1000-1:5000,FC 1:10-1:100
<b>Molecular Weight</b>	Calculated MW:128 kDa; Observed MW:128 kDa

**Antigen Information**

<b>Gene Name</b>	ABL2
<b>Alternative Names</b>	ARG; ABLL
<b>Gene ID</b>	27
<b>SwissProt ID</b>	P42684
<b>Immunogen</b>	A synthetic peptide of human ABL2

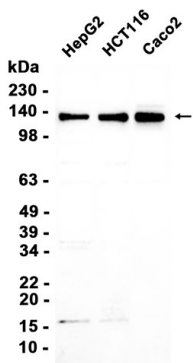
**Background**

This gene encodes a member of the Abelson family of nonreceptor tyrosine protein kinases. The protein is highly similar to the c-abl oncogene 1 protein, including the tyrosine kinase, SH2 and SH3 domains, and it plays a role in cytoskeletal

rearrangements through its C-terminal F-actin- and microtubule-binding sequences. This gene is expressed in both normal and tumor cells, and is involved in translocation with the ets variant 6 gene in leukemia. Multiple alternatively spliced transcript variants encoding different protein isoforms have been found for this gene. [provided by RefSeq, Nov 2009]

## Research Area

## Image Data



Western blot analysis of extracts from HepG2, HCT116, Caco2 cells using ABL2 Rabbit Monoclonal Antibody at 1:3000.