

---

**Product Name: BBS1 Rabbit Monoclonal Antibody****Catalog #: AMRe87754**

For research use only.

**Summary**

<b>Description</b>	Recombinant rabbit monoclonal antibody
<b>Host</b>	Rabbit
<b>Application</b>	WB,ICC/IF
<b>Reactivity</b>	Human,Mouse,Rat
<b>Conjugation</b>	Unconjugated
<b>Modification</b>	Unmodified
<b>Isotype</b>	IgG
<b>Clonality</b>	Monoclonal
<b>Form</b>	Liquid
<b>Concentration</b>	
<b>Storage</b>	Aliquot and store at -20°C (valid for 12 months). Avoid freeze/thaw cycles.
<b>Shipping</b>	Ice bags
<b>Buffer</b>	Supplied in 50mM Tris-Glycine(pH 7.4), 0.15M NaCl, 40% Glycerol, 0.01% sodium azide and 0.05% protective protein. Stable for 12 months from date of receipt.
<b>Purification</b>	Affinity Purification

**Application**

<b>Dilution Ratio</b>	WB 1:1000-1:5000,ICC/IF 1:100-1:200
<b>Molecular Weight</b>	Calculated MW:65 kDa; Observed MW:65 kDa

**Antigen Information**

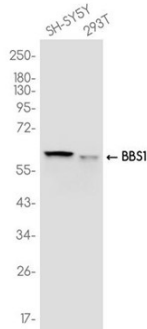
<b>Gene Name</b>	BBS1
<b>Alternative Names</b>	BBS2L2
<b>Gene ID</b>	582
<b>SwissProt ID</b>	Q8NFJ9
<b>Immunogen</b>	A synthetic peptide of human BBS1

**Background**

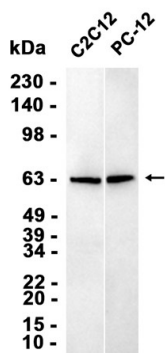
Mutations in this gene have been observed in patients with the major form (type 1) of Bardet-Biedl syndrome. The encoded protein may play a role in eye, limb, cardiac and reproductive system development. [provided by RefSeq, Jul 2008]

## Research Area

## Image Data



Western blot analysis of extracts from SH-SY5Y, 293T cells using BBS1 Rabbit Monoclonal Antibody at 1:1000.



Western blot analysis of extracts from C2C12, PC-12 cells using AMRe87754 at 1:1000.