

Product Name: Ferritin Heavy Chain Rabbit Monoclonal Antibody
Catalog #: AMRe87751

Summary

Production Name	Ferritin Heavy Chain Rabbit Monoclonal Antibody
Description	Rabbit Monoclonal antibody
Host	Rabbit
Application	WB, ICC/IF, FC
Reactivity	Human, Mouse, Rat

Performance

Conjugation	Unconjugated
Modification	Unmodified
Isotype	IgG
Clonality	Monoclonal
Form	Liquid
Storage	Store at 4°C short term. Aliquot and store at -20°C long term. Avoid freeze/thaw cycles.
Buffer	Supplied in 50mM Tris-Glycine(pH 7.4), 0.15M NaCl, 40% Glycerol, 0.01% sodium azide and 0.05% BSA. Stable for 12 months from date of receipt.
Purification	Affinity Purification

Immunogen

Gene Name	Ferritin Heavy Chain Rabbit Monoclonal Antibody
Alternative Names	FHC; FTH; HFE5; PLIF; FTHL6; PIG15
Gene ID	2495
SwissProt ID	P02794.

Application

Dilution Ratio	WB: 1:1000 ICC/IF: 1:100 FC: 1:20-1:50
Molecular Weight	Calculated MW:21 kDa; Observed MW:21 kDa

Product Name: Ferritin Heavy Chain Rabbit Monoclonal Antibody
Catalog #: AMRe87751

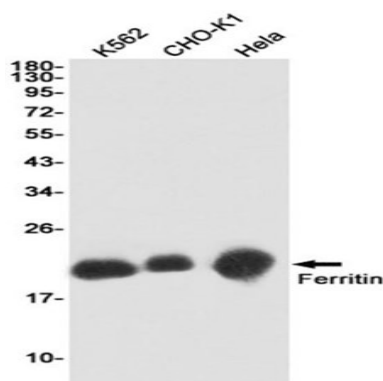


Background

This gene encodes the heavy subunit of ferritin, the major intracellular iron storage protein in prokaryotes and eukaryotes. It is composed of 24 subunits of the heavy and light ferritin chains. Variation in ferritin subunit composition may affect the rates of iron uptake and release in different tissues. A major function of ferritin is the storage of iron in a soluble and nontoxic state. Defects in ferritin proteins are associated with several neurodegenerative diseases. This gene has multiple pseudogenes. Several alternatively spliced transcript variants have been observed, but their biological validity has not been determined. [provided by RefSeq, Jul 2008]

Research Area

Image Data

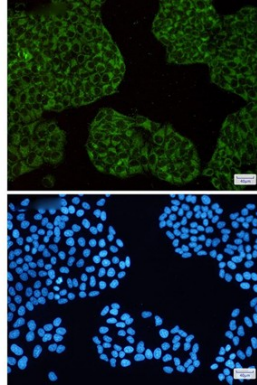


Western blot detection of Ferritin in K562, CHO-K1, HeLa cell lysates using Ferritin antibody (1:1000 diluted).



Western blot analysis of extracts from HCT116 cells and Rat intestine tissue using AMRe87751 at 1:1000.

Product Name: Ferritin Heavy Chain Rabbit Monoclonal Antibody
Catalog #: AMRe87751



Immunofluorescent analysis of HeLa cells using AMRe87751 antibody (green), and DAPI (blue).

Note

For research use only.