
Product Name: GSDMD Rabbit Monoclonal Antibody**Catalog #: AMRe87750**

For research use only.

Summary

Description	Recombinant rabbit monoclonal antibody
Host	Rabbit
Application	WB,IHC,FC,IP
Reactivity	Mouse,Rat
Conjugation	Unconjugated
Modification	Unmodified
Isotype	IgG
Clonality	Monoclonal
Form	Liquid
Concentration	0.5mg/ml. The concentration of this product may be batch-dependent.
Storage	Aliquot and store at -20°C (valid for 12 months). Avoid freeze/thaw cycles.
Shipping	Ice bags
Buffer	Supplied in 50mM Tris-Glycine(pH 7.4), 0.15M NaCl, 40% Glycerol, 0.01% sodium azide and 0.05% protective protein. Stable for 12 months from date of receipt.
Purification	Affinity Purification

Application

Dilution Ratio	WB 1:500-1:2000,IHC 1:200-1:1000,FC 1:200-1:500,IP 1:20-1:50
Molecular Weight	Calculated MW:53 kDa; Observed MW:53,31 kDa

Antigen Information

Gene Name	GSDMD
Alternative Names	DF5L; M2-4; Dfna5l; GsdmD-1; Gsdmdc1; 1810036L03Rik
Gene ID	69146
SwissProt ID	Q9D8T2
Immunogen	Recombinant protein of mouse GSDMD

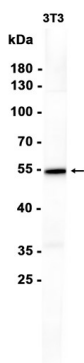
Background

Enables phospholipid binding activity and wide pore channel activity. Involved in several processes, including defense response to bacterium; positive regulation of interleukin-1 beta production; and protein-containing complex assembly. Acts upstream of

or within cellular response to extracellular stimulus. Located in cytosol; extracellular space; and plasma membrane. Part of NLRP3 inflammasome complex. Is expressed in several structures, including gut; liver; lung; metanephros; and spleen. Orthologous to human GSDMD (gasdermin D). [provided by Alliance of Genome Resources, Apr 2022]

Research Area

Image Data



Western blot analysis of extracts from 3T3 cells using GSDMD Rabbit Monoclonal Antibody at 1:1000.