

**Product Name: SMARCD1 Rabbit Monoclonal Antibody**  
**Catalog #: AMRe87749**



## Summary

<b>Production Name</b>	SMARCD1 Rabbit Monoclonal Antibody
<b>Description</b>	Rabbit Monoclonal antibody
<b>Host</b>	Rabbit
<b>Application</b>	WB, ICC/IF, FC, IP
<b>Reactivity</b>	Human,Mouse

## Performance

<b>Conjugation</b>	Unconjugated
<b>Modification</b>	Unmodified
<b>Isotype</b>	IgG
<b>Clonality</b>	Monoclonal
<b>Form</b>	Liquid
<b>Storage</b>	Store at 4°C short term. Aliquot and store at -20°C long term. Avoid freeze/thaw cycles.
<b>Buffer</b>	Supplied in 50mM Tris-Glycine(pH 7.4), 0.15M NaCl, 40% Glycerol, 0.01% sodium azide and 0.05% BSA. Stable for 12 months from date of receipt.
<b>Purification</b>	Affinity Purification

## Immunogen

<b>Gene Name</b>	SMARCD1
<b>Alternative Names</b>	CSS11; Rsc6p; BAF60A; CRACD1
<b>Gene ID</b>	6602
<b>SwissProt ID</b>	Q96GM5.

## Application

<b>Dilution Ratio</b>	WB: 1:1000 ICC/IF: 1:50 FC: 1:200-1:500 IP: 1:20-1:50
<b>Molecular Weight</b>	Calculated MW:58 kDa; Observed MW:58 kDa

## Background

The protein encoded by this gene is a member of the SWI/SNF family of proteins, whose members display helicase and

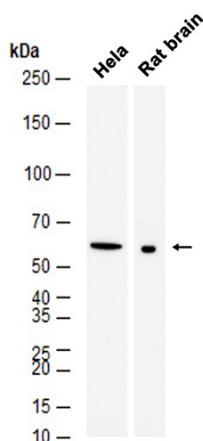
**Product Name: SMARCD1 Rabbit Monoclonal Antibody**  
**Catalog #: AMRe87749**



ATPase activities and which are thought to regulate transcription of certain genes by altering the chromatin structure around those genes. The encoded protein is part of the large ATP-dependent chromatin remodeling complex SNF/SWI and has sequence similarity to the yeast Swp73 protein. Two transcript variants encoding different isoforms have been found for this gene. [provided by RefSeq, Jul 2008]

## Research Area

## Image Data



Western blot analysis of extracts from HeLa cells and Rat brain tissue using AMRe87749 at 1:1000.

## Note

For research use only.