

**Product Name: CPSF6 Rabbit Monoclonal Antibody****Catalog #: AMRe87746**

For research use only.

**Summary**

<b>Description</b>	Recombinant rabbit monoclonal antibody
<b>Host</b>	Rabbit
<b>Application</b>	WB,IHC,ICC/IF,FC,IP
<b>Reactivity</b>	Human,Mouse,Rat
<b>Conjugation</b>	Unconjugated
<b>Modification</b>	Unmodified
<b>Isotype</b>	IgG
<b>Clonality</b>	Monoclonal
<b>Form</b>	Liquid
<b>Concentration</b>	
<b>Storage</b>	Aliquot and store at -20°C (valid for 12 months). Avoid freeze/thaw cycles.
<b>Shipping</b>	Ice bags
<b>Buffer</b>	Supplied in 50mM Tris-Glycine(pH 7.4), 0.15M NaCl, 40% Glycerol, 0.01% sodium azide and 0.05% protective protein. Stable for 12 months from date of receipt.
<b>Purification</b>	Affinity Purification

**Application**

<b>Dilution Ratio</b>	WB 1:2000-1:20000,IHC 1:100-1:200,ICC/IF 1:100-1:200,FC 1:10-1:100,IP 1:10-1:100
<b>Molecular Weight</b>	Calculated MW:59 kDa; Observed MW:70 kDa

**Antigen Information**

<b>Gene Name</b>	CPSF6
<b>Alternative Names</b>	CFIM; CFIM68; CFIM72; HPBR11-4; HPBR11-7
<b>Gene ID</b>	11052
<b>SwissProt ID</b>	Q16630
<b>Immunogen</b>	A synthetic peptide of human CPSF6

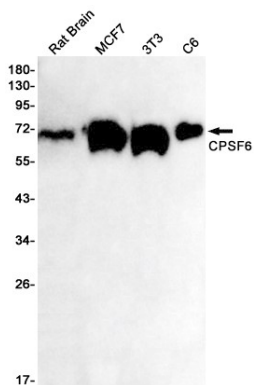
**Background**

The protein encoded by this gene is one subunit of a cleavage factor required for 3' RNA cleavage and polyadenylation processing. The interaction of the protein with the RNA is one of the earliest steps in the assembly of the 3' end processing

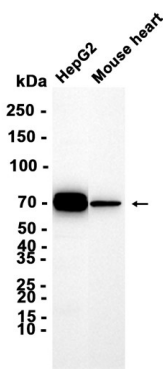
complex and facilitates the recruitment of other processing factors. The cleavage factor complex is composed of four polypeptides. This gene encodes the 68kD subunit. It has a domain organization reminiscent of spliceosomal proteins. [provided by RefSeq, Jul 2008]

## Research Area

## Image Data



Western blot detection of CPSF6 in Rat Brain, MCF7, 3T3, C6 cell lysates using CPSF6 antibody (1:1000 diluted).



Western blot analysis of extracts from HepG2 cells and Mouse heart tissue using AMRe87746 at 1:5000.