

**Product Name: BRG1 Rabbit Monoclonal Antibody**  
**Catalog #: AMRe87742**



## Summary

<b>Production Name</b>	BRG1 Rabbit Monoclonal Antibody
<b>Description</b>	Rabbit Monoclonal antibody
<b>Host</b>	Rabbit
<b>Application</b>	WB, IHC-P, ICC/IF, FC, IP
<b>Reactivity</b>	Human,Mouse,Rat

## Performance

<b>Conjugation</b>	Unconjugated
<b>Modification</b>	Unmodified
<b>Isotype</b>	IgG
<b>Clonality</b>	Monoclonal
<b>Form</b>	Liquid
<b>Storage</b>	Store at 4°C short term. Aliquot and store at -20°C long term. Avoid freeze/thaw cycles.
<b>Buffer</b>	Supplied in 50mM Tris-Glycine(pH 7.4), 0.15M NaCl, 40% Glycerol, 0.01% sodium azide and 0.05% BSA. Stable for 12 months from date of receipt.
<b>Purification</b>	Affinity Purification

## Immunogen

<b>Gene Name</b>	BRG1
<b>Alternative Names</b>	Brg1; SW1/SNF; HP1-BP72; SNF2beta; b2b692Clo; b2b508.1Clo
<b>Gene ID</b>	20586
<b>SwissProt ID</b>	Q3TKT4.

## Application

<b>Dilution Ratio</b>	WB: 1:2000-1:20000 IHC-P: 1:100-1:200 ICC/IF: 1:200-1:500 FC: 1:100-1:200 IP: 1:10-1:100
<b>Molecular Weight</b>	Calculated MW:185 kDa; Observed MW:220 kDa

## Background

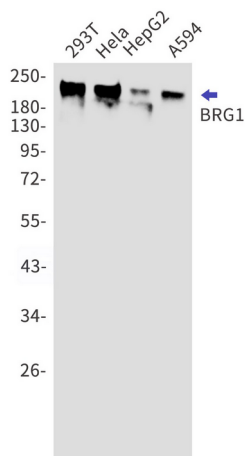
**Product Name: BRG1 Rabbit Monoclonal Antibody**  
**Catalog #: AMRe87742**



Transcriptional coactivator cooperating with nuclear hormone receptors to potentiate transcriptional activation. Component of the CREST-BRG1 complex, a multiprotein complex that regulates promoter activation by orchestrating a calcium-dependent release of a repressor complex and a recruitment of an activator complex. In resting neurons, transcription of the c-FOS promoter is inhibited by BRG1-dependent recruitment of a phospho-RB1-HDAC repressor complex. Upon calcium influx, RB1 is dephosphorylated by calcineurin, which leads to release of the repressor complex. At the same time, there is increased recruitment of CREBBP to the promoter by a CREST-dependent mechanism, which leads to transcriptional activation. The CREST-BRG1 complex also binds to the NR2B promoter, and activity-dependent induction of NR2B expression involves a release of HDAC1 and recruitment of CREBBP (By similarity).

## Research Area

## Image Data



Western blot detection of BRG1 in 293T, HeLa, HepG2, A594 cell lysates using BRG1 antibody (1:1000 diluted).

## Note

For research use only.