

Product Name: Cullin 3 Rabbit Monoclonal Antibody**Catalog #: AMRe87740**

For research use only.

Summary

Description	Recombinant rabbit monoclonal antibody
Host	Rabbit
Application	WB,FC
Reactivity	Human,Mouse,Rat
Conjugation	Unconjugated
Modification	Unmodified
Isotype	IgG
Clonality	Monoclonal
Form	Liquid
Concentration	
Storage	Aliquot and store at -20°C (valid for 12 months). Avoid freeze/thaw cycles.
Shipping	Ice bags
Buffer	Supplied in 50mM Tris-Glycine(pH 7.4), 0.15M NaCl, 40% Glycerol, 0.01% sodium azide and 0.05% protective protein. Stable for 12 months from date of receipt.
Purification	Affinity Purification

Application

Dilution Ratio	WB 1:5000-1:50000,FC 1:20-1:100
Molecular Weight	Calculated MW:89 kDa; Observed MW:89 kDa

Antigen Information

Gene Name	Cullin 3
Alternative Names	CUL-3; PHA2E
Gene ID	8452
SwissProt ID	Q13618
Immunogen	A synthetic peptide of human Cullin 3

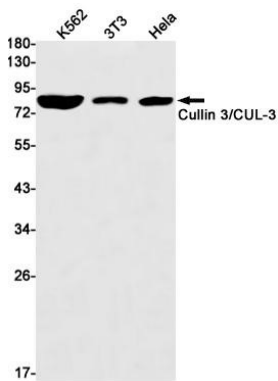
Background

This gene encodes a member of the cullin protein family. The encoded protein plays a critical role in the polyubiquitination and subsequent degradation of specific protein substrates as the core component and scaffold protein of an E3 ubiquitin ligase

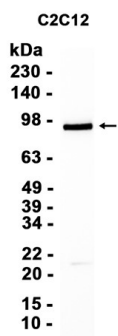
complex. Complexes including the encoded protein may also play a role in late endosome maturation. Mutations in this gene are a cause of type 2E pseudohypoaldosteronism. Alternatively spliced transcript variants encoding multiple isoforms have been observed for this gene. [provided by RefSeq, Mar 2012]

Research Area

Image Data



Western blot detection of Cullin 3/CUL-3 in K562,3T3,HeLa cell lysates using Cullin 3/CUL-3 antibody(1:1000 diluted).



Western blot analysis of extracts from C2C12 cells using AMRe87740 at 1:5000.