

Product Name: Sumo-2/3 Rabbit Monoclonal Antibody
Catalog #: AMRe87736



Summary

Production Name	Sumo-2/3 Rabbit Monoclonal Antibody
Description	Rabbit Monoclonal antibody
Host	Rabbit
Application	WB, IHC-P, ICC/IF
Reactivity	Human,Mouse,Rat

Performance

Conjugation	Unconjugated
Modification	Unmodified
Isotype	IgG
Clonality	Monoclonal
Form	Liquid
Storage	Store at 4°C short term. Aliquot and store at -20°C long term. Avoid freeze/thaw cycles.
Buffer	Supplied in 50mM Tris-Glycine(pH 7.4), 0.15M NaCl, 40% Glycerol, 0.01% sodium azide and 0.05% BSA. Stable for 12 months from date of receipt.
Purification	Affinity Purification

Immunogen

Gene Name	Sumo-2/3
Alternative Names	HSMT3; SMT3B; SUMO3; Smt3A; SMT3H2
Gene ID	6613, 6612
SwissProt ID	P61956, P55854.

Application

Dilution Ratio	WB: 1:1000-1:5000 IHC-P: 1:100-1:200 ICC/IF: 1:200-1:500
Molecular Weight	Calculated MW:11,16 kDa; Observed MW:16 kDa

Background

This gene encodes a protein that is a member of the SUMO (small ubiquitin-like modifier) protein family. It functions in a

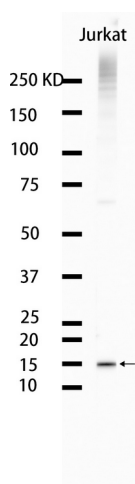
Product Name: Sumo-2/3 Rabbit Monoclonal Antibody
Catalog #: AMRe87736



manner similar to ubiquitin in that it is bound to target proteins as part of a post-translational modification system. However, unlike ubiquitin which targets proteins for degradation, this protein is involved in a variety of cellular processes, such as nuclear transport, transcriptional regulation, apoptosis, and protein stability. It is not active until the last two amino acids of the carboxy-terminus have been cleaved off. Numerous pseudogenes have been reported for this gene. Alternate transcriptional splice variants, encoding different isoforms, have been characterized. [provided by RefSeq, Jul 2008]

Research Area

Image Data



Western blot analysis of extracts from Jurkat cells using AMRe87736 at 1:1000.

Note

For research use only.