

Product Name: ALDH16A1 Rabbit Monoclonal Antibody
Catalog #: AMRe87728



Summary

Production Name	ALDH16A1 Rabbit Monoclonal Antibody
Description	Rabbit Monoclonal antibody
Host	Rabbit
Application	WB, IHC-P
Reactivity	Human,Mouse,Rat

Performance

Conjugation	Unconjugated
Modification	Unmodified
Isotype	IgG
Clonality	Monoclonal
Form	Liquid
Storage	Store at 4°C short term. Aliquot and store at -20°C long term. Avoid freeze/thaw cycles.
Buffer	Supplied in 50mM Tris-Glycine(pH 7.4), 0.15M NaCl, 40% Glycerol, 0.01% sodium azide and 0.05% BSA. Stable for 12 months from date of receipt.
Purification	Affinity Purification

Immunogen

Gene Name	ALDH16A1
Alternative Names	ALDH16A1
Gene ID	126133, 69748, 361571
SwissProt ID	Q8IZ83, Q571I9, Q3T1L0.

Application

Dilution Ratio	WB: 1:1000-1:5000 IHC-P: 1:50-1:100
Molecular Weight	Calculated MW:85 kDa; Observed MW:85 kDa

Background

This gene encodes a member of the aldehyde dehydrogenase superfamily. The family members act on aldehyde substrates

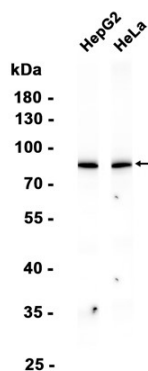
Product Name: ALDH16A1 Rabbit Monoclonal Antibody
Catalog #: AMRe87728



and use nicotinamide adenine dinucleotide phosphate (NADP) as a cofactor. This gene is conserved in chimpanzee, dog, cow, mouse, rat, and zebrafish. The protein encoded by this gene interacts with maspardin, a protein that when truncated is responsible for Mast syndrome. Alternatively spliced transcript variants encoding different isoforms have been found for this gene. [provided by RefSeq, Apr 2010]

Research Area

Image Data



Western blot analysis of extracts from HepG2, HeLa cells using AMRe87728 at 1:1000.

Note

For research use only.