
Product Name: ALDH7A1 Rabbit Monoclonal Antibody**Catalog #: AMRe87727**

For research use only.

Summary

| | |
|----------------------|--|
| Description | Recombinant rabbit monoclonal antibody |
| Host | Rabbit |
| Application | WB,IHC,ICC/IF,FC,IP |
| Reactivity | Human,Mouse,Rat |
| Conjugation | Unconjugated |
| Modification | Unmodified |
| Isotype | IgG |
| Clonality | Monoclonal |
| Form | Liquid |
| Concentration | |
| Storage | Aliquot and store at -20°C (valid for 12 months). Avoid freeze/thaw cycles. |
| Shipping | Ice bags |
| Buffer | Supplied in 50mM Tris-Glycine(pH 7.4), 0.15M NaCl, 40% Glycerol, 0.01% sodium azide and 0.05% protective protein. Stable for 12 months from date of receipt. |
| Purification | Affinity Purification |

Application

| | |
|-------------------------|---|
| Dilution Ratio | WB 1:2000-1:20000,IHC 1:200-1:2000,ICC/IF 1:20-1:50,FC 1:20-1:50,IP 1:20-1:50 |
| Molecular Weight | Calculated MW:59 kDa; Observed MW:59 kDa |

Antigen Information

| | |
|--------------------------|--------------------------------------|
| Gene Name | ALDH7A1 |
| Alternative Names | EPD; PDE; ATQ1 |
| Gene ID | 501, 110695 |
| SwissProt ID | P49419, Q9DBF1 |
| Immunogen | A synthetic peptide of human ALDH7A1 |

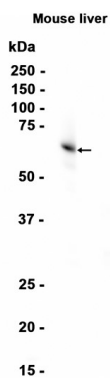
Background

The protein encoded by this gene is a member of subfamily 7 in the aldehyde dehydrogenase gene family. These enzymes are thought to play a major role in the detoxification of aldehydes generated by alcohol metabolism and lipid peroxidation. This

particular member has homology to a previously described protein from the green garden pea, the 26g pea turgor protein. It is also involved in lysine catabolism that is known to occur in the mitochondrial matrix. Recent reports show that this protein is found both in the cytosol and the mitochondria, and the two forms likely arise from the use of alternative translation initiation sites. An additional variant encoding a different isoform has also been found for this gene. Mutations in this gene are associated with pyridoxine-dependent epilepsy. Several related pseudogenes have also been identified. [provided by RefSeq, Jan 2011]

Research Area

Image Data



Western blot analysis of extracts from Mouse liver tissue using ALDH7A1 Rabbit Monoclonal Antibody at 1:1000.