

Product Name: BMAL1 Rabbit Monoclonal Antibody
Catalog #: AMRe87713



Summary

Production Name	BMAL1 Rabbit Monoclonal Antibody
Description	Rabbit Monoclonal antibody
Host	Rabbit
Application	WB, IHC, ICC/IF, IP
Reactivity	Human, Mouse, Rat

Performance

Conjugation	Unconjugated
Modification	Unmodified
Isotype	IgG
Clonality	Monoclonal
Form	Liquid
Storage	Store at 4°C short term. Aliquot and store at -20°C long term. Avoid freeze/thaw cycles.
Buffer	Supplied in 50mM Tris-Glycine(pH 7.4), 0.15M NaCl, 40% Glycerol, 0.01% sodium azide and 0.05% BSA. Stable for 12 months from date of receipt.
Purification	Affinity Purification

Immunogen

Gene Name	BMAL1
Alternative Names	TIC; JAP3; MOP3; ARNTL; PASD3; ARNTL1; BMAL1c; bHLHe5
Gene ID	406, 11865, 29657
SwissProt ID	O00327, Q9WTL8, Q9EPW1.

Application

Dilution Ratio	WB: 1:1000 IHC: 1:200-1:1000 ICC/IF: 1:100 IP: 1:20-1:40
Molecular Weight	Calculated MW:69 kDa; Observed MW:78 kDa

Background

The protein encoded by this gene is a basic helix-loop-helix protein that forms a heterodimer with CLOCK. This

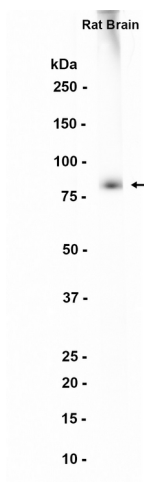
Product Name: BMAL1 Rabbit Monoclonal Antibody
Catalog #: AMRe87713



heterodimer binds E-box enhancer elements upstream of Period (PER1, PER2, PER3) and Cryptochrome (CRY1, CRY2) genes and activates transcription of these genes. PER and CRY proteins heterodimerize and repress their own transcription by interacting in a feedback loop with CLOCK/ARNTL complexes. Defects in this gene have been linked to infertility, problems with gluconeogenesis and lipogenesis, and altered sleep patterns. The protein regulates interferon-stimulated gene expression and is an important factor in viral infection, including COVID-19. [provided by RefSeq, Oct 2021]

Research Area

Image Data



Western blot analysis of extracts from Rat brain tissue using AMRe87713 at 1:1000.

Note

For research use only.