

**Product Name: Bovine Serum Albumin Rabbit
Monoclonal Antibody
Catalog #: AMRe87712**

Summary

Production Name	Bovine Serum Albumin Rabbit Monoclonal Antibody
Description	Rabbit Monoclonal antibody
Host	Rabbit
Application	WB, IHC-P
Reactivity	Human, Mouse, Rat

Performance

Conjugation	Unconjugated
Modification	Unmodified
Isotype	IgG
Clonality	Monoclonal
Form	Liquid
Storage	Store at 4°C short term. Aliquot and store at -20°C long term. Avoid freeze/thaw cycles.
Buffer	Supplied in 50mM Tris-Glycine(pH 7.4), 0.15M NaCl, 40% Glycerol, 0.01% sodium azide and 0.05% BSA. Stable for 12 months from date of receipt.
Purification	Affinity Purification

Immunogen

Gene Name	Bovine Serum Albumin
Alternative Names	HSA; FDAHT; PRO0883; PRO0903; PRO1341
Gene ID	280717, 213, 11657, 24186
SwissProt ID	P02769, P02768, P07724, P02770.

Application

Dilution Ratio	WB: 1:1000-1:5000 IHC-P: 1:100-1:200
Molecular Weight	Calculated MW:69 kDa; Observed MW:69 kDa

Background

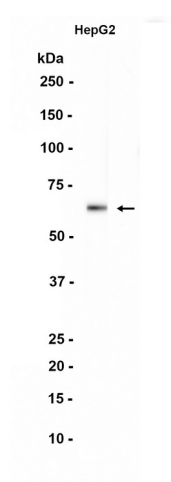
**Product Name: Bovine Serum Albumin Rabbit
Monoclonal Antibody
Catalog #: AMRe87712**



This gene encodes the most abundant protein in human blood. This protein functions in the regulation of blood plasma colloid osmotic pressure and acts as a carrier protein for a wide range of endogenous molecules including hormones, fatty acids, and metabolites, as well as exogenous drugs. Additionally, this protein exhibits an esterase-like activity with broad substrate specificity. The encoded preproprotein is proteolytically processed to generate the mature protein. A peptide derived from this protein, EPI-X4, is an endogenous inhibitor of the CXCR4 chemokine receptor. [provided by RefSeq, Jul 2016]

Research Area

Image Data



Western blot analysis of extracts from HepG2 cells using AMRe87712 at 1:1000.

Note

For research use only.