

Product Name: CLCN2 Rabbit Monoclonal Antibody**Catalog #: AMRe87706**

For research use only.

Summary

Description	Recombinant rabbit monoclonal antibody
Host	Rabbit
Application	WB,IHC
Reactivity	Human,Mouse,Rat
Conjugation	Unconjugated
Modification	Unmodified
Isotype	IgG
Clonality	Monoclonal
Form	Liquid
Concentration	
Storage	Aliquot and store at -20°C (valid for 12 months). Avoid freeze/thaw cycles.
Shipping	Ice bags
Buffer	Supplied in 50mM Tris-Glycine(pH 7.4), 0.15M NaCl, 40% Glycerol, 0.01% sodium azide and 0.05% protective protein. Stable for 12 months from date of receipt.
Purification	Affinity Purification

Application

Dilution Ratio	WB 1:1000-1:5000,IHC 1:50-1:100
Molecular Weight	Calculated MW:99 kDa; Observed MW:99 kDa

Antigen Information

Gene Name	CLCN2
Alternative Names	CLC2; ECA2; ECA3; EGI3; EGMA; EJM6; EJM8; CIC-2; EGI11; LKPAT; cIC-2
Gene ID	1181, 12724, 29232
SwissProt ID	P51788, Q9R0A1, P35525
Immunogen	A synthetic peptide of human CLCN2

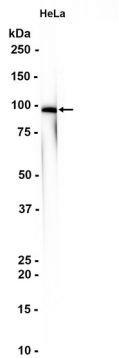
Background

This gene encodes a voltage-gated chloride channel. The encoded protein is a transmembrane protein that maintains chloride ion homeostasis in various cells. Defects in this gene may be a cause of certain epilepsies. Four transcript variants encoding

different isoforms have been found for this gene. [provided by RefSeq, Mar 2012]

Research Area

Image Data



Western blot analysis of extracts from HeLa cells using CLCN2 Rabbit Monoclonal Antibody at 1:1000.