

Product Name: EBF1 Rabbit Monoclonal Antibody
Catalog #: AMRe87703



Summary

Production Name	EBF1 Rabbit Monoclonal Antibody
Description	Rabbit Monoclonal antibody
Host	Rabbit
Application	WB
Reactivity	Human,Mouse,Rat

Performance

Conjugation	Unconjugated
Modification	Unmodified
Isotype	IgG
Clonality	Monoclonal
Form	Liquid
Storage	Store at 4°C short term. Aliquot and store at -20°C long term. Avoid freeze/thaw cycles.
Buffer	Supplied in 50mM Tris-Glycine(pH 7.4), 0.15M NaCl, 40% Glycerol, 0.01% sodium azide and 0.05% BSA. Stable for 12 months from date of receipt.
Purification	Affinity Purification

Immunogen

Gene Name	EBF1
Alternative Names	EBF; COE1; OLF1; O/E-1
Gene ID	1879, 13591, 116543
SwissProt ID	Q9UH73, Q07802, Q63398.

Application

Dilution Ratio	WB: 1:1000-1:5000
Molecular Weight	Calculated MW:65 kDa; Observed MW:65 kDa

Background

Predicted to enable DNA-binding transcription activator activity, RNA polymerase II-specific and RNA polymerase II cis-

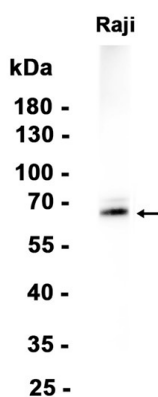
Product Name: EBF1 Rabbit Monoclonal Antibody
Catalog #: AMRe87703



regulatory region sequence-specific DNA binding activity. Predicted to be involved in positive regulation of transcription by RNA polymerase II. Predicted to act upstream of or within positive regulation of transcription, DNA-templated. Predicted to be located in nucleus. Predicted to be part of chromatin. [provided by Alliance of Genome Resources, Apr 2022]

Research Area

Image Data



Western blot analysis of extracts from Raji cells using AMRe87703 at 1:1000.

Note

For research use only.