
Product Name: GSPT1 Rabbit Monoclonal Antibody**Catalog #: AMRe87701**

For research use only.

Summary

| | |
|----------------------|--|
| Description | Recombinant rabbit monoclonal antibody |
| Host | Rabbit |
| Application | WB |
| Reactivity | Human, Mouse |
| Conjugation | Unconjugated |
| Modification | Unmodified |
| Isotype | IgG |
| Clonality | Monoclonal |
| Form | Liquid |
| Concentration | |
| Storage | Aliquot and store at -20°C (valid for 12 months). Avoid freeze/thaw cycles. |
| Shipping | Ice bags |
| Buffer | Supplied in 50mM Tris-Glycine(pH 7.4), 0.15M NaCl, 40% Glycerol, 0.01% sodium azide and 0.05% protective protein. Stable for 12 months from date of receipt. |
| Purification | Affinity Purification |

Application

| | |
|-------------------------|--|
| Dilution Ratio | WB 1:500-1:2000 |
| Molecular Weight | Calculated MW:56 kDa; Observed MW:80 kDa |

Antigen Information

| | |
|--------------------------|------------------------------------|
| Gene Name | GSPT1 |
| Alternative Names | GST1; ETF3A; eRF3a; 551G9.2 |
| Gene ID | 2935, 14852 |
| SwissProt ID | P15170, Q8R050 |
| Immunogen | Recombinant protein of human GSPT1 |

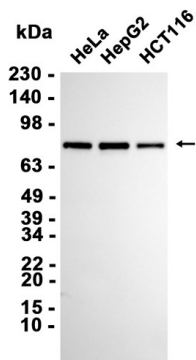
Background

Enables translation release factor activity. Involved in regulation of translational termination. Acts upstream of or within protein methylation. Predicted to be located in cytosol. Predicted to be part of translation release factor complex. [provided by Alliance

of Genome Resources, Apr 2022]

Research Area

Image Data



Western blot analysis of extracts from HeLa, HepG2, HCT116 cells using GSPT1 Rabbit Monoclonal Antibody at 1:1000.