

---

**Product Name: GALNTL2 Rabbit Monoclonal Antibody****Catalog #: AMRe87697**

For research use only.

**Summary**

<b>Description</b>	Recombinant rabbit monoclonal antibody
<b>Host</b>	Rabbit
<b>Application</b>	WB,IHC
<b>Reactivity</b>	Human,Mouse,Rat
<b>Conjugation</b>	Unconjugated
<b>Modification</b>	Unmodified
<b>Isotype</b>	IgG
<b>Clonality</b>	Monoclonal
<b>Form</b>	Liquid
<b>Concentration</b>	
<b>Storage</b>	Aliquot and store at -20°C (valid for 12 months). Avoid freeze/thaw cycles.
<b>Shipping</b>	Ice bags
<b>Buffer</b>	Supplied in 50mM Tris-Glycine(pH 7.4), 0.15M NaCl, 40% Glycerol, 0.01% sodium azide and 0.05% protective protein. Stable for 12 months from date of receipt.
<b>Purification</b>	Affinity Purification

**Application**

<b>Dilution Ratio</b>	WB 1:1000-1:5000,IHC 1:50-1:100
<b>Molecular Weight</b>	Calculated MW:73 kDa; Observed MW:73 kDa

**Antigen Information**

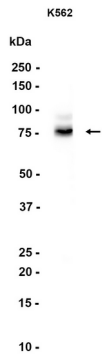
<b>Gene Name</b>	GALNTL2
<b>Alternative Names</b>	PIH5; GALNT7; GALNT13; GALNTL2; GALNACT15; pp-GalNAc-T15
<b>Gene ID</b>	117248, 78754, 100360475
<b>SwissProt ID</b>	Q8N3T1, Q9D2N8
<b>Immunogen</b>	A synthetic peptide of human GALNTL2

**Background**

Predicted to enable polypeptide N-acetylgalactosaminyltransferase activity. Predicted to be involved in O-glycan processing. Located in transport vesicle. [provided by Alliance of Genome Resources, Apr 2022]

## Research Area

## Image Data



Western blot analysis of extracts from K562 cells using GALNTL2 Rabbit Monoclonal Antibody at 1:1000.