
Product Name: GIRK2 Rabbit Monoclonal Antibody**Catalog #: AMRe87696**

For research use only.

Summary

Description	Recombinant rabbit monoclonal antibody
Host	Rabbit
Application	WB,IP
Reactivity	Mouse,Rat
Conjugation	Unconjugated
Modification	Unmodified
Isotype	IgG
Clonality	Monoclonal
Form	Liquid
Concentration	
Storage	Aliquot and store at -20°C (valid for 12 months). Avoid freeze/thaw cycles.
Shipping	Ice bags
Buffer	Supplied in 50mM Tris-Glycine(pH 7.4), 0.15M NaCl, 40% Glycerol, 0.01% sodium azide and 0.05% protective protein. Stable for 12 months from date of receipt.
Purification	Affinity Purification

Application

Dilution Ratio	WB 1:500-1:2000,IP 1:20-1:50
Molecular Weight	Calculated MW:49 kDa; Observed MW:46 kDa

Antigen Information

Gene Name	GIRK2
Alternative Names	wv; BIR1; GIRK2; KATP2; KCNJ7; Kir3.2; weaver
Gene ID	16522, 25743
SwissProt ID	P48550, Unigene, 328720
Immunogen	Recombinant protein of mouse GIRK2

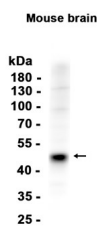
Background

Enables G-protein activated inward rectifier potassium channel activity. Acts upstream of or within thyroid hormone metabolic process. Located in parallel fiber to Purkinje cell synapse. Is integral component of presynaptic membrane. Is expressed in

several structures, including alimentary system; brain; eye; genitourinary system; and skeleton. Human ortholog(s) of this gene implicated in alcohol use disorder and heroin dependence. Orthologous to human KCNJ6 (potassium inwardly rectifying channel subfamily J member 6). [provided by Alliance of Genome Resources, Apr 2022]

Research Area

Image Data



Western blot analysis of extracts from Mouse brain tissue using GIRK2 Rabbit Monoclonal Antibody at 1:1000.