
Product Name: AMPA Receptor 4 (GluA 4) Rabbit Monoclonal Antibody**Catalog #: AMRe87695**

For research use only.

Summary

Description	Recombinant rabbit monoclonal antibody
Host	Rabbit
Application	WB,FC
Reactivity	Human,Mouse,Rat
Conjugation	Unconjugated
Modification	Unmodified
Isotype	IgG
Clonality	Monoclonal
Form	Liquid
Concentration	0.5mg/ml. The concentration of this product may be batch-dependent.
Storage	Aliquot and store at -20°C (valid for 12 months). Avoid freeze/thaw cycles.
Shipping	Ice bags
Buffer	Supplied in 50mM Tris-Glycine(pH 7.4), 0.15M NaCl, 40% Glycerol, 0.01% sodium azide and 0.05% protective protein. Stable for 12 months from date of receipt.
Purification	Affinity Purification

Application

Dilution Ratio	WB 1:1000-1:5000,FC 1:10-1:100
Molecular Weight	Calculated MW:101 kDa; Observed MW:101 kDa

Antigen Information

Gene Name	AMPA Receptor 4
Alternative Names	GLUR4; GLURD; GluA4; GLUR4C
Gene ID	2893, 14802, 29629
SwissProt ID	P48058, Q9Z2W8, P19493
Immunogen	A synthetic peptide of human AMPA Receptor 4

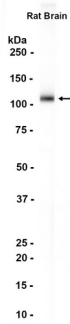
Background

Glutamate receptors are the predominant excitatory neurotransmitter receptors in the mammalian brain and are activated in a variety of normal neurophysiologic processes. These receptors are heteromeric protein complexes composed of multiple

subunits, arranged to form ligand-gated ion channels. The classification of glutamate receptors is based on their activation by different pharmacologic agonists. The subunit encoded by this gene belongs to a family of AMPA (alpha-amino-3-hydroxy-5-methyl-4-isoxazole propionate)-sensitive glutamate receptors, and is subject to RNA editing (AGA->GGA; R->G). Alternative splicing of this gene results in transcript variants encoding different isoforms, which may vary in their signal transduction properties. Some haplotypes of this gene show a positive association with schizophrenia. [provided by RefSeq, Jul 2008]

Research Area

Image Data



Western blot analysis of extracts from Rat brain tissue using AMPA Receptor 4 (GluA 4) Rabbit Monoclonal Antibody at 1:1000.