

**Product Name: Cyclin A2 Rabbit Monoclonal Antibody****Catalog #: AMRe87689**

For research use only.

**Summary**

<b>Description</b>	Recombinant rabbit monoclonal antibody
<b>Host</b>	Rabbit
<b>Application</b>	WB,IHC,ICC/IF
<b>Reactivity</b>	Human,Mouse,Rat
<b>Conjugation</b>	Unconjugated
<b>Modification</b>	Unmodified
<b>Isotype</b>	IgG
<b>Clonality</b>	Monoclonal
<b>Form</b>	Liquid
<b>Concentration</b>	
<b>Storage</b>	Aliquot and store at -20°C (valid for 12 months). Avoid freeze/thaw cycles.
<b>Shipping</b>	Ice bags
<b>Buffer</b>	Supplied in 50mM Tris-Glycine(pH 7.4), 0.15M NaCl, 40% Glycerol, 0.01% sodium azide and 0.05% protective protein. Stable for 12 months from date of receipt.
<b>Purification</b>	Affinity Purification

**Application**

<b>Dilution Ratio</b>	WB 1:500-1:2000,IHC 1:200-1:500,ICC/IF 1:200-1:500
<b>Molecular Weight</b>	Calculated MW:49 kDa; Observed MW:49 kDa

**Antigen Information**

<b>Gene Name</b>	Cyclin A2
<b>Alternative Names</b>	Ccn1; Ccna; Cyca; Ccn-1; CycA2; AA408589
<b>Gene ID</b>	12428
<b>SwissProt ID</b>	P51943
<b>Immunogen</b>	Recombinant protein of mouse Cyclin A2

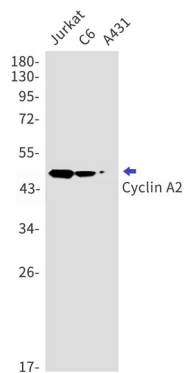
**Background**

Cyclin which controls both the G1/S and the G2/M transition phases of the cell cycle. Functions through the formation of specific serine/threonine kinase holoenzyme complexes with the cyclin-dependent protein kinases CDK1 and CDK2. The cyclin

subunit confers the substrate specificity of these complexes and differentially interacts with and activates CDK1 and CDK2 throughout the cell cycle.

## Research Area

## Image Data



Western blot detection of Cyclin A2 in Jurkat,C6,A431 cell lysates using Cyclin A2 antibody(1:1000 diluted).