

**Product Name: CCR7 Rabbit Monoclonal Antibody****Catalog #: AMRe87677**

For research use only.

**Summary**

<b>Description</b>	Recombinant rabbit monoclonal antibody
<b>Host</b>	Rabbit
<b>Application</b>	WB,IHC,ICC/IF,IP
<b>Reactivity</b>	Human,Mouse,Rat
<b>Conjugation</b>	Unconjugated
<b>Modification</b>	Unmodified
<b>Isotype</b>	IgG
<b>Clonality</b>	Monoclonal
<b>Form</b>	Liquid
<b>Concentration</b>	
<b>Storage</b>	Aliquot and store at -20°C (valid for 12 months). Avoid freeze/thaw cycles.
<b>Shipping</b>	Ice bags
<b>Buffer</b>	Supplied in 50mM Tris-Glycine(pH 7.4), 0.15M NaCl, 40% Glycerol, 0.01% sodium azide and 0.05% protective protein. Stable for 12 months from date of receipt.
<b>Purification</b>	Affinity Purification

**Application**

<b>Dilution Ratio</b>	WB 1:2000-1:10000,IHC 1:50-1:200,ICC/IF 1:100-1:200,IP 1:20-1:50
<b>Molecular Weight</b>	Calculated MW:43 kDa; Observed MW:43 kDa

**Antigen Information**

<b>Gene Name</b>	CCR7
<b>Alternative Names</b>	BLR2; EBI1; CCR-7; CD197; CDw197; CMKBR7; CC-CKR-7
<b>Gene ID</b>	1236
<b>SwissProt ID</b>	P32248
<b>Immunogen</b>	A synthetic peptide of human CCR7

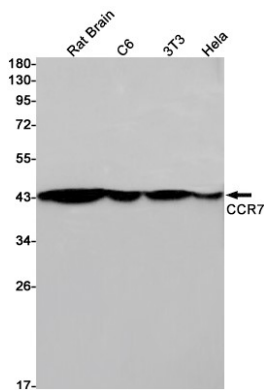
**Background**

The protein encoded by this gene is a member of the G protein-coupled receptor family. This receptor was identified as a gene induced by the Epstein-Barr virus (EBV), and is thought to be a mediator of EBV effects on B lymphocytes. This receptor is

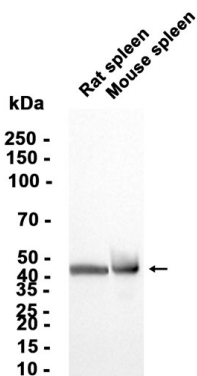
expressed in various lymphoid tissues and activates B and T lymphocytes. It has been shown to control the migration of memory T cells to inflamed tissues, as well as stimulate dendritic cell maturation. The chemokine (C-C motif) ligand 19 (CCL19/ECL) has been reported to be a specific ligand of this receptor. Signals mediated by this receptor regulate T cell homeostasis in lymph nodes, and may also function in the activation and polarization of T cells, and in chronic inflammation pathogenesis. Alternative splicing of this gene results in multiple transcript variants. [provided by RefSeq, Sep 2014]

## Research Area

## Image Data



Western blot detection of CCR7 in Rat Brain, C6, 3T3, HeLa cell lysates using CCR7 antibody (1:1000 diluted).



Western blot analysis of extracts from Rat spleen, Mouse spleen tissue using AMRe87677 at 1:2000.