
Product Name: PIGU Rabbit Monoclonal Antibody**Catalog #: AMRe87676**

For research use only.

Summary

Description	Recombinant rabbit monoclonal antibody
Host	Rabbit
Application	WB,IHC
Reactivity	Human,Mouse,Rat
Conjugation	Unconjugated
Modification	Unmodified
Isotype	IgG
Clonality	Monoclonal
Form	Liquid
Concentration	
Storage	Aliquot and store at -20°C (valid for 12 months). Avoid freeze/thaw cycles.
Shipping	Ice bags
Buffer	Supplied in 50mM Tris-Glycine(pH 7.4), 0.15M NaCl, 40% Glycerol, 0.01% sodium azide and 0.05% protective protein. Stable for 12 months from date of receipt.
Purification	Affinity Purification

Application

Dilution Ratio	WB 1:1000-1:5000,IHC 1:200-1:1000
Molecular Weight	Calculated MW:50 kDa; Observed MW:50 kDa

Antigen Information

Gene Name	PIGU
Alternative Names	GAB1; CDC91L1
Gene ID	128869, 228812, 353304
SwissProt ID	Q9H490, Q8K358, Q8CHJ1
Immunogen	A synthetic peptide of human PIGU

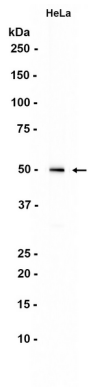
Background

The protein encoded by this gene shares similarity with *Saccharomyces cerevisiae* Cdc91, a predicted integral membrane protein that may function in cell division control. The protein encoded by this gene is the fifth subunit of GPI transamidase that

attaches GPI-anchors to proteins. [provided by RefSeq, Jul 2008]

Research Area

Image Data



Western blot analysis of extracts from HeLa cells using PIGU Rabbit Monoclonal Antibody at 1:1000.