

---

**Product Name: PPP2CA/B Rabbit Monoclonal Antibody****Catalog #: AMRe87673**

For research use only.

**Summary**

<b>Description</b>	Recombinant rabbit monoclonal antibody
<b>Host</b>	Rabbit
<b>Application</b>	WB,IHC,IP
<b>Reactivity</b>	Human,Mouse,Rat
<b>Conjugation</b>	Unconjugated
<b>Modification</b>	Unmodified
<b>Isotype</b>	IgG
<b>Clonality</b>	Monoclonal
<b>Form</b>	Liquid
<b>Concentration</b>	
<b>Storage</b>	Aliquot and store at -20°C (valid for 12 months). Avoid freeze/thaw cycles.
<b>Shipping</b>	Ice bags
<b>Buffer</b>	Supplied in 50mM Tris-Glycine(pH 7.4), 0.15M NaCl, 40% Glycerol, 0.01% sodium azide and 0.05% protective protein. Stable for 12 months from date of receipt.
<b>Purification</b>	Affinity Purification

**Application**

<b>Dilution Ratio</b>	WB 1:500-1:2000,IHC 1:50-1:100,IP 1:50-1:100
<b>Molecular Weight</b>	Calculated MW:36 kDa; Observed MW:36 kDa

**Antigen Information**

<b>Gene Name</b>	PPP2CA/B
<b>Alternative Names</b>	RP-C; PP2Ac; PP2CA; PP2Calpha
<b>Gene ID</b>	5515, 5516
<b>SwissProt ID</b>	P62714, P67775
<b>Immunogen</b>	A synthetic peptide of human PPP2CA

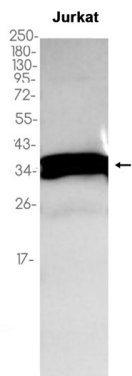
**Background**

This gene encodes the phosphatase 2A catalytic subunit. Protein phosphatase 2A is one of the four major Ser/Thr phosphatases, and it is implicated in the negative control of cell growth and division. It consists of a common heteromeric core

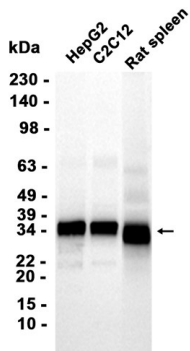
enzyme, which is composed of a catalytic subunit and a constant regulatory subunit, that associates with a variety of regulatory subunits. This gene encodes an alpha isoform of the catalytic subunit. [provided by RefSeq, Jul 2008]

## Research Area

## Image Data



Western blot analysis of extracts from Jurkat cells using PPP2CA/B Rabbit Monoclonal Antibody at 1:1000.



Western blot analysis of extracts from HepG2, C2C12 cells and Rat spleen tissue using AMRe87673 at 1:1000.