
Product Name: ALDH7A1 Rabbit Monoclonal Antibody**Catalog #: AMRe87670**

For research use only.

Summary

Description	Recombinant rabbit monoclonal antibody
Host	Rabbit
Application	WB,IHC
Reactivity	Human,Mouse
Conjugation	Unconjugated
Modification	Unmodified
Isotype	IgG
Clonality	Monoclonal
Form	Liquid
Concentration	0.1mg/ml. The concentration of this product may be batch-dependent.
Storage	Aliquot and store at -20°C (valid for 12 months). Avoid freeze/thaw cycles.
Shipping	Ice bags
Buffer	Supplied in 50mM Tris-Glycine(pH 7.4), 0.15M NaCl, 40% Glycerol, 0.01% sodium azide and 0.05% protective protein. Stable for 12 months from date of receipt.
Purification	Affinity Purification

Application

Dilution Ratio	WB 1:1000-1:5000,IHC 1:500-1:2000
Molecular Weight	Calculated MW:59 kDa; Observed MW:59 kDa

Antigen Information

Gene Name	ALDH7A1
Alternative Names	EPD; PDE; ATQ1
Gene ID	501
SwissProt ID	P49419
Immunogen	A synthetic peptide of human ALDH7A1

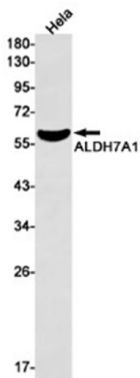
Background

The protein encoded by this gene is a member of subfamily 7 in the aldehyde dehydrogenase gene family. These enzymes are thought to play a major role in the detoxification of aldehydes generated by alcohol metabolism and lipid peroxidation. This

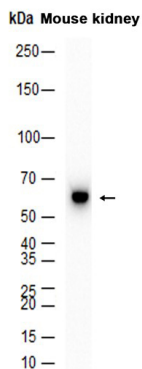
particular member has homology to a previously described protein from the green garden pea, the 26g pea turgor protein. It is also involved in lysine catabolism that is known to occur in the mitochondrial matrix. Recent reports show that this protein is found both in the cytosol and the mitochondria, and the two forms likely arise from the use of alternative translation initiation sites. An additional variant encoding a different isoform has also been found for this gene. Mutations in this gene are associated with pyridoxine-dependent epilepsy. Several related pseudogenes have also been identified. [provided by RefSeq, Jan 2011]

Research Area

Image Data



Western blot detection of ALDH7A1 in HeLa cell lysates using ALDH7A1 antibody(1:1000 diluted).



Western blot analysis of extracts from Mouse kidney tissue using AMRe87670 at 1:2000.