

---

**Product Name: ENO1/ENO2/ENO3 Rabbit Monoclonal Antibody****Catalog #: AMRe87667**

For research use only.

**Summary**

<b>Description</b>	Recombinant rabbit monoclonal antibody
<b>Host</b>	Rabbit
<b>Application</b>	WB
<b>Reactivity</b>	Human, Mouse, Rat
<b>Conjugation</b>	Unconjugated
<b>Modification</b>	Unmodified
<b>Isotype</b>	IgG
<b>Clonality</b>	Monoclonal
<b>Form</b>	Liquid
<b>Concentration</b>	
<b>Storage</b>	Aliquot and store at -20°C (valid for 12 months). Avoid freeze/thaw cycles.
<b>Shipping</b>	Ice bags
<b>Buffer</b>	Supplied in 50mM Tris-Glycine(pH 7.4), 0.15M NaCl, 40% Glycerol, 0.01% sodium azide and 0.05% protective protein. Stable for 12 months from date of receipt.
<b>Purification</b>	Affinity Purification

**Application**

<b>Dilution Ratio</b>	WB 1:500-1:2000
<b>Molecular Weight</b>	Calculated MW:47 kDa; Observed MW:47 kDa

**Antigen Information**

<b>Gene Name</b>	ENO1/ENO2/ENO3
<b>Alternative Names</b>	NNE; PPH; MPB1; ENO1L1; HEL-S-17
<b>Gene ID</b>	2023
<b>SwissProt ID</b>	P06733
<b>Immunogen</b>	Recombinant protein of human ENO1

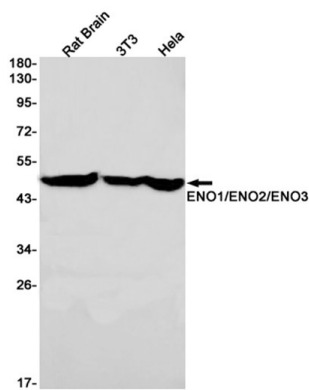
**Background**

This gene encodes alpha-enolase, one of three enolase isoenzymes found in mammals. Each isoenzyme is a homodimer composed of 2 alpha, 2 gamma, or 2 beta subunits, and functions as a glycolytic enzyme. Alpha-enolase in addition, functions

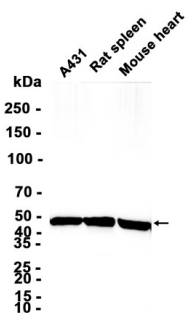
as a structural lens protein (tau-crystallin) in the monomeric form. Alternative splicing of this gene results in a shorter isoform that has been shown to bind to the c-myc promoter and function as a tumor suppressor. Several pseudogenes have been identified, including one on the long arm of chromosome 1. Alpha-enolase has also been identified as an autoantigen in Hashimoto encephalopathy. [provided by RefSeq, Jan 2011]

## Research Area

## Image Data



Western blot detection of ENO1/ENO2/ENO3 in Rat Brain, 3T3, HeLa cell lysates using ENO1/ENO2/ENO3 antibody (1:1000 diluted).



Western blot analysis of extracts from A431 cells and Rat spleen, Mouse heart tissue using AMRe87667 at 1:1000.