

**Product Name: Phospho-RSK1 p90 (Ser380) Rabbit Monoclonal Antibody**  
**Catalog #: AMRe87666**

---

## Summary

|                        |  |
|------------------------|--|
| <b>Production Name</b> | Phospho-RSK1 p90 (Ser380) Rabbit Monoclonal Antibody |
| <b>Description</b>     | Rabbit Monoclonal antibody                           |
| <b>Host</b>            | Rabbit   |
| <b>Application</b>     | WB, ICC/IF, IP                                       |
| <b>Reactivity</b>      | Human,Mouse,Rat                                      |

## Performance

|                     |  |
|---------------------|--|
| <b>Conjugation</b>  | Unconjugated   |
| <b>Modification</b> | Phosphorylated   |
| <b>Isotype</b>      | IgG  |
| <b>Clonality</b>    | Monoclonal   |
| <b>Form</b>         | Liquid   |
| <b>Storage</b>      | Store at 4°C short term. Aliquot and store at -20°C long term. Avoid freeze/thaw cycles.   |
| <b>Buffer</b>       | Supplied in 50mM Tris-Glycine(pH 7.4), 0.15M NaCl, 40% Glycerol, 0.01% sodium azide and 0.05% protective protein. Stable for 12 months from date of receipt. |
| <b>Purification</b> | Affinity Purification  |

## Immunogen

|                          |  |
|--------------------------|--|
| <b>Gene Name</b>         | Phospho-RSK1 p90 (Ser380) Rabbit Monoclonal Antibody |
| <b>Alternative Names</b> | RSK; HU-1; RSK1; p90Rsk; MAPKAPK1; MAPKAPK1A         |
| <b>Gene ID</b>           | 6195   |
| <b>SwissProt ID</b>      | Q15418.  |

## Application

|                         |  |
|-------------------------|--|
| <b>Dilution Ratio</b>   | WB: 1:1000-1:5000 ICC/IF: 1:50 IP: 1:20  |
| <b>Molecular Weight</b> | Calculated MW:83 kDa; Observed MW:90 kDa |

**Product Name: Phospho-RSK1 p90 (Ser380) Rabbit  
Monoclonal Antibody  
Catalog #: AMRe87666**

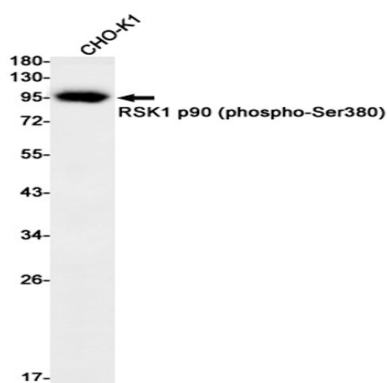


## Background

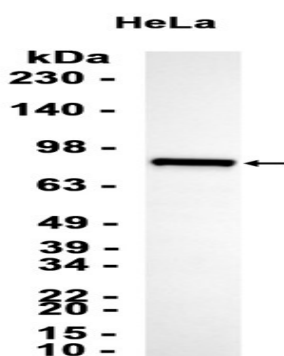
This gene encodes a member of the RSK (ribosomal S6 kinase) family of serine/threonine kinases. This kinase contains 2 nonidentical kinase catalytic domains and phosphorylates various substrates, including members of the mitogen-activated kinase (MAPK) signalling pathway. The activity of this protein has been implicated in controlling cell growth and differentiation. Alternate transcriptional splice variants, encoding different isoforms, have been characterized. [provided by RefSeq, Jul 2008]

## Research Area

## Image Data



Western blot detection of RSK1 p90 (phospho-Ser380) in CHO-K1 cell lysates using RSK1 p90 (phospho-Ser380) antibody(1:1000 diluted).



Western blot analysis of extracts from HeLa cells using AMRe87666 at 1:2000.

## Note

For research use only.