

**Product Name: Inhibin beta A Rabbit Monoclonal Antibody****Catalog #: AMRe87664**

For research use only.

**Summary**

<b>Description</b>	Recombinant rabbit monoclonal antibody
<b>Host</b>	Rabbit
<b>Application</b>	WB
<b>Reactivity</b>	Human, Mouse, Rat
<b>Conjugation</b>	Unconjugated
<b>Modification</b>	Unmodified
<b>Isotype</b>	IgG
<b>Clonality</b>	Monoclonal
<b>Form</b>	Liquid
<b>Concentration</b>	
<b>Storage</b>	Aliquot and store at -20°C (valid for 12 months). Avoid freeze/thaw cycles.
<b>Shipping</b>	Ice bags
<b>Buffer</b>	Supplied in 50mM Tris-Glycine(pH 7.4), 0.15M NaCl, 40% Glycerol, 0.01% sodium azide and 0.05% protective protein. Stable for 12 months from date of receipt.
<b>Purification</b>	Affinity Purification

**Application**

<b>Dilution Ratio</b>	WB 1:1000-1:5000
<b>Molecular Weight</b>	Calculated MW:47 kDa; Observed MW:44 kDa

**Antigen Information**

<b>Gene Name</b>	Inhibin beta A
<b>Alternative Names</b>	EDF; FRP
<b>Gene ID</b>	3624
<b>SwissProt ID</b>	P08476
<b>Immunogen</b>	A synthetic peptide of human Inhibin beta A

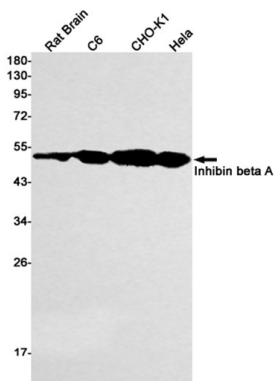
**Background**

This gene encodes a member of the TGF-beta (transforming growth factor-beta) superfamily of proteins. The encoded preproprotein is proteolytically processed to generate a subunit of the dimeric activin and inhibin protein complexes. These

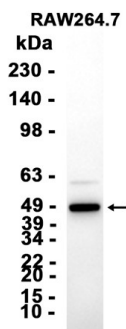
complexes activate and inhibit, respectively, follicle stimulating hormone secretion from the pituitary gland. The encoded protein also plays a role in eye, tooth and testis development. Elevated expression of this gene may be associated with cancer cachexia in human patients. [provided by RefSeq, Aug 2016]

## Research Area

## Image Data



Western blot detection of Inhibin beta A in Rat Brain,C6,CHO-K1,HeLa cell lysates using Inhibin beta A antibody(1:1000 diluted).



Western blot analysis of extracts from RAW264.7 cells using AMRe87664 at 1:3000.