
Product Name: c-Rel Rabbit Monoclonal Antibody**Catalog #: AMRe87663**

For research use only.

Summary

Description	Recombinant rabbit monoclonal antibody
Host	Rabbit
Application	WB,IP
Reactivity	Human
Conjugation	Unconjugated
Modification	Unmodified
Isotype	IgG
Clonality	Monoclonal
Form	Liquid
Concentration	
Storage	Aliquot and store at -20°C (valid for 12 months). Avoid freeze/thaw cycles.
Shipping	Ice bags
Buffer	Supplied in 50mM Tris-Glycine(pH 7.4), 0.15M NaCl, 40% Glycerol, 0.01% sodium azide and 0.05% protective protein. Stable for 12 months from date of receipt.
Purification	Affinity Purification

Application

Dilution Ratio	WB 1:500-1:2000,IP 1:10-1:100
Molecular Weight	Calculated MW:69 kDa; Observed MW:78 kDa

Antigen Information

Gene Name	c-Rel
Alternative Names	C-Rel
Gene ID	5966
SwissProt ID	Q04864
Immunogen	A synthetic peptide of human c-Rel

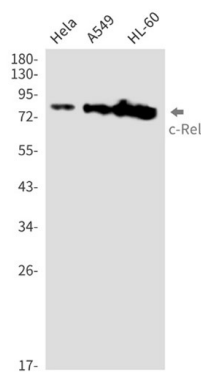
Background

This gene encodes a protein that belongs to the Rel homology domain/immunoglobulin-like fold, plexin, transcription factor (RHD/IPT) family. Members of this family regulate genes involved in apoptosis, inflammation, the immune response, and

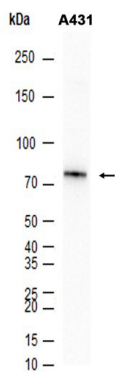
oncogenic processes. This proto-oncogene plays a role in the survival and proliferation of B lymphocytes. Mutation or amplification of this gene is associated with B-cell lymphomas, including Hodgkin's lymphoma. Single nucleotide polymorphisms in this gene are associated with susceptibility to ulcerative colitis and rheumatoid arthritis. Alternative splicing results in multiple transcript variants encoding different isoforms. [provided by RefSeq, Apr 2014]

Research Area

Image Data



Western blot detection of c-Rel in HeLa,A549,HL-60 cell lysates using c-Rel antibody(1:1000 diluted).



Western blot analysis of extracts from A431 cells using AMRe87663 at 1:5000.